

For Research Use Only

C3 Recombinant monoclonal antibody, PBS Only

Catalog Number: 87386-1-PBS



Basic Information

Catalog Number: 87386-1-PBS	GenBank Accession Number: NM_000064.4	Purification Method: Protein A purification
Size: 100ug, Concentration: 1 mg/ml by Nanodrop;	GeneID (NCBI): 718	CloneNo.: 252159E1
Source: Rabbit	UNIPROT ID: P01024	
Isotype: IgG	Full Name: complement component 3	
Immunogen Catalog Number: EG4880	Calculated MW: 187 kDa	
	Observed MW: 115-120 kDa	

Applications

Tested Applications:
WB, IHC, Indirect ELISA

Species Specificity:
human

Background Information

The complement system is an important effector that bridges the innate and adaptive immune systems (PMID: 20010915). The third component of complement, C3, plays a central role in activating the complement system. Its processing by C3 convertase is the central reaction in both classical and alternative complement pathways (PMID: 11414361). Human C3 (190-195 kDa), composed of α and β chains (115-120 and 75 kDa, respectively), is cleaved into C3a and C3b by C3 convertase. C3b is composed of the α' chain and β chain (PMID: 27210597). Factor I cleaves the α' chain of C3b to 68 kDa and 43 kDa degradation products (iC3b) (PMID: 25395424; 14527961). This antibody was raised against 672-1663 aa of the human C3 protein.

Storage

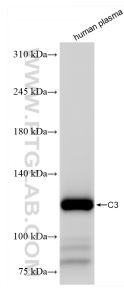
Storage:
Store at -80°C.

Storage Buffer:
PBS only, pH7.3

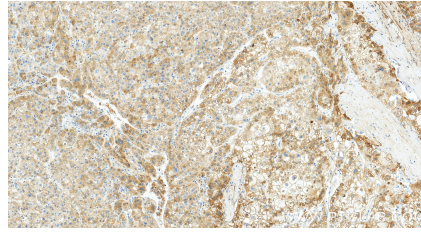
For technical support and original validation data for this product please contact:
T: 1 (888) 4PTGLAB (1-888-478-4522) (toll free in USA), or 1(312) 455-8498 (outside USA) E: proteintech@ptglab.com
W: ptglab.com

This product is exclusively available under Proteintech Group brand and is not available to purchase from any other manufacturer.

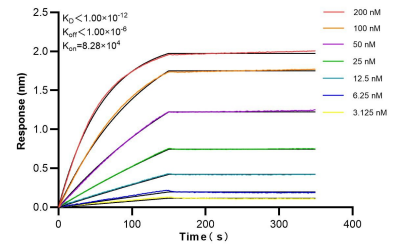
Selected Validation Data



Human plasma was subjected to SDS PAGE followed by western blot with 87386-1-RR (Complement component C3 antibody) at dilution of 1:10000 incubated at room temperature for 1.5 hours. This data was developed using the same antibody clone with 87386-1-PBS in a different storage buffer formulation.



Immunohistochemical analysis of paraffin-embedded human liver cancer tissue slide using 87386-1-RR (C3 antibody) at dilution of 1:1000 (under 20x lens). Heat mediated antigen retrieval with Tris-EDTA buffer (pH 9.0). This data was developed using the same antibody clone with 87386-1-PBS in a different storage buffer formulation.



Bi-layer interferometry (BLI) kinetic assays of 87386-1-RR against Human C3 were performed. The affinity constant is below 1 pM.