

For Research Use Only

Complement component C3 Recombinant monoclonal antibody, PBS Only (Detector)

Catalog Number: 87386-2-PBS



Basic Information

Catalog Number: 87386-2-PBS	GenBank Accession Number: NM_000064.4	Purification Method: Protein A purification
Size: 100ug , Concentration: 1 mg/ml by Nanodrop;	GeneID (NCBI): 718	CloneNo.: 252159D4
Source: Rabbit	UNIPROT ID: P01024	
Isotype: IgG	Full Name: complement component 3	
Immunogen Catalog Number: EG4880	Calculated MW: 187 kDa	

Applications

Tested Applications:
Cytometric bead array, Indirect ELISA

Species Specificity:
human

Product Information

87386-2-PBS targets Complement component C3 as part of a matched antibody pair:

MP03006-1: 87386-3-PBS capture and 87386-2-PBS detection (validated in Cytometric bead array)

Unconjugated rabbit recombinant monoclonal antibody in PBS only (BSA and azide free) storage buffer at a concentration of 1 mg/mL, ready for conjugation. Created using Proteintech's proprietary in-house recombinant technology. Recombinant production enables unrivalled batch-to-batch consistency, easy scale-up, and future security of supply.

This conjugation ready format makes antibodies ideal for use in many applications including: ELISAs, multiplex assays requiring matched pairs, mass cytometry, and multiplex imaging applications. Antibody use should be optimized by the end user for each application and assay.

Storage

Storage:
Store at -80°C.
Storage Buffer:
PBS only, pH7.3

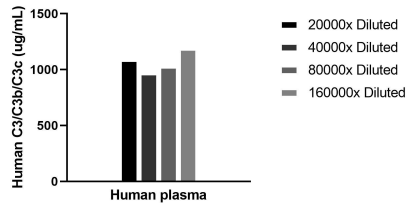
For technical support and original validation data for this product please contact:

T: 1 (888) 4PTGLAB (1-888-478-4522) (toll free
in USA), or 1(312) 455-8498 (outside USA)

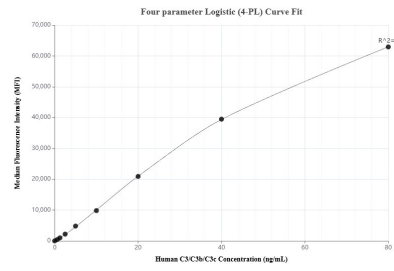
E: proteintech@ptglab.com
W: ptglab.com

This product is exclusively available under Proteintech Group brand and is not available to purchase from any other manufacturer.

Selected Validation Data



The mean C3/C3b/C3c concentration was determined to be 1064 ug/mL in Human plasma.



Cytometric bead array standard curve of MP03006-1, C3/C3b/C3c Recombinant Matched Antibody Pair, PBS Only. Capture antibody: 87386-3-PBS. Detection antibody: 87386-2-PBS. Standard: Eg4880. Range: 0.625-80 ng/mL.