

For Research Use Only

# Complement component C3 Recombinant monoclonal antibody, PBS Only (Detector)

Catalog Number: 87386-4-PBS



## Basic Information

|   |   |   |
|---|---|---|
| <b>Catalog Number:</b><br>87386-4-PBS                         | <b>GenBank Accession Number:</b><br>NM_000064.4 | <b>Purification Method:</b><br>Protein A purification |
| <b>Size:</b><br>100ug, Concentration: 1 mg/ml by<br>Nanodrop; | <b>GeneID (NCBI):</b><br>718                    | <b>CloneNo.:</b><br>252159D7                          |
| <b>Source:</b><br>Rabbit                                      | <b>UNIPROT ID:</b><br>P01024                    |   |
| <b>Isotype:</b><br>IgG  | <b>Full Name:</b><br>complement component 3     |   |
| <b>Immunogen Catalog Number:</b><br>EG4880                    | <b>Calculated MW:</b><br>187 kDa                |   |

## Applications

**Tested Applications:**  
Sandwich ELISA, Indirect ELISA

**Species Specificity:**  
human

## Product Information

87386-4-PBS targets Complement component C3 as part of a matched antibody pair:

MP03006-2: 87386-5-PBS capture and 87386-4-PBS detection (validated in Sandwich ELISA)

Unconjugated rabbit recombinant monoclonal antibody in PBS only (BSA and azide free) storage buffer at a concentration of 1 mg/mL, ready for conjugation. Created using Proteintech's proprietary in-house recombinant technology. Recombinant production enables unrivalled batch-to-batch consistency, easy scale-up, and future security of supply.

This conjugation ready format makes antibodies ideal for use in many applications including: ELISAs, multiplex assays requiring matched pairs, mass cytometry, and multiplex imaging applications. Antibody use should be optimized by the end user for each application and assay.

## Storage

**Storage:**  
Store at -80°C.

**Storage Buffer:**  
PBS only, pH7.3

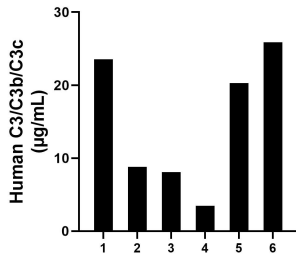
For technical support and original validation data for this product please contact:

T: 1 (888) 4PTGLAB (1-888-478-4522) (toll free  
in USA), or 1(312) 455-8498 (outside USA)

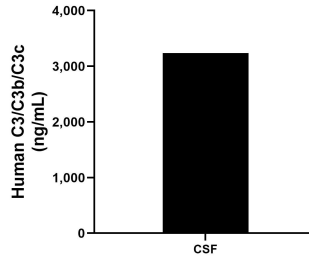
E: [proteintech@ptglab.com](mailto:proteintech@ptglab.com)  
W: [ptglab.com](http://ptglab.com)

**This product is exclusively available under Proteintech Group brand and is not available to purchase from any other manufacturer.**

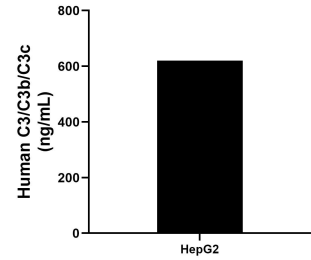
## Selected Validation Data



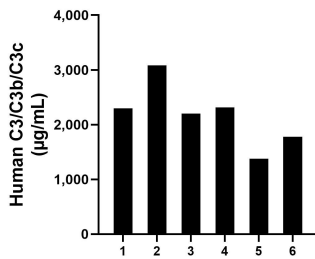
Saliva of six individual healthy human donors was measured. The human C3/C3b/C3c concentration of detected samples was determined to be 15.02 µg/mL with a range of 3.49 - 25.88 µg/mL.



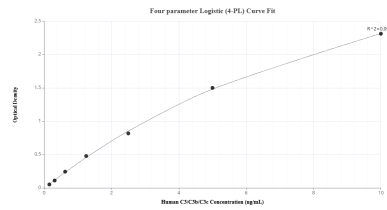
CSF of one individual healthy human donors was measured. The human C3/C3b/C3c concentration of detected samples was determined to be 3,234.93 ng/mL.



HepG2 (human hepatocellular carcinoma cells) were cultured in DMEM supplemented with 10% fetal bovine serum, 2.5 mM L-glutamine, 100 U/mL penicillin, and 100 µg/mL streptomycin sulfate. An aliquot of the cell culture supernate was removed, assayed for human C3/C3b/C3c, and measured 620.71 ng/mL.



Plasma of six individual healthy human donors was measured. The human C3/C3b/C3c concentration of detected samples was determined to be 2,175.94 µg/mL with a range of 1,379.7 - 3,080.62 µg/mL.



Sandwich ELISA standard curve of MP03006-2, Human C3/C3b/C3c Recombinant Matched Antibody Pair - PBS only. 87386-5-PBS was coated to a plate as the capture antibody and incubated with serial dilutions of standard Eg4880. 87386-4-PBS was HRP conjugated as the detection antibody. Range: 0.156-10 ng/mL