

For Research Use Only

Complement component C3 Recombinant monoclonal antibody, PBS Only (Capture)

Catalog Number: 87386-5-PBS



Basic Information

Catalog Number: 87386-5-PBS	GenBank Accession Number: NM_000064.4	Purification Method: Protein A purification
Size: 100ug , Concentration: 1 mg/ml by Nanodrop;	GeneID (NCBI): 718	CloneNo.: 252159D3
Source: Rabbit	UNIPROT ID: P01024	
Isotype: IgG	Full Name: complement component 3	
Immunogen Catalog Number: EG4880	Calculated MW: 187 kDa	

Applications

Tested Applications:
Sandwich ELISA, Indirect ELISA

Species Specificity:
human

Product Information

87386-5-PBS targets Complement component C3 as part of a matched antibody pair:

MP03006-2: 87386-5-PBS capture and 87386-4-PBS detection (validated in Sandwich ELISA)

Unconjugated rabbit recombinant monoclonal antibody in PBS only (BSA and azide free) storage buffer at a concentration of 1 mg/mL, ready for conjugation. Created using Proteintech's proprietary in-house recombinant technology. Recombinant production enables unrivalled batch-to-batch consistency, easy scale-up, and future security of supply.

This conjugation ready format makes antibodies ideal for use in many applications including: ELISAs, multiplex assays requiring matched pairs, mass cytometry, and multiplex imaging applications. Antibody use should be optimized by the end user for each application and assay.

Storage

Storage:
Store at -80°C.
Storage Buffer:
PBS only, pH7.3

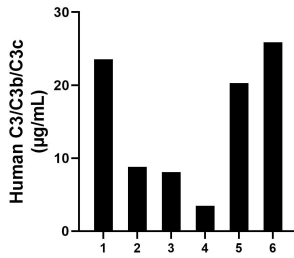
For technical support and original validation data for this product please contact:

T: 1 (888) 4PTGLAB (1-888-478-4522) (toll free
in USA), or 1(312) 455-8498 (outside USA)

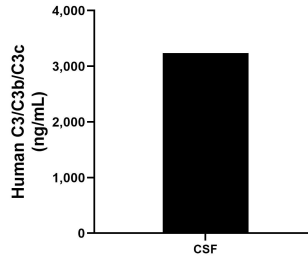
E: proteintech@ptglab.com
W: ptglab.com

This product is exclusively available under Proteintech Group brand and is not available to purchase from any other manufacturer.

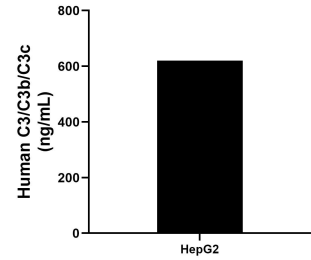
Selected Validation Data



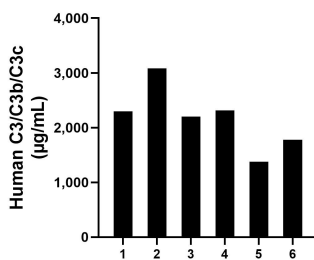
Saliva of six individual healthy human donors was measured. The human C3/C3b/C3c concentration of detected samples was determined to be 15.02 µg/mL with a range of 3.49 - 25.88 µg/mL.



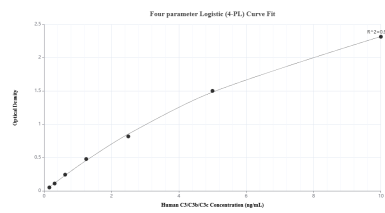
CSF of one individual healthy human donors was measured. The human C3/C3b/C3c concentration of detected samples was determined to be 3,234.93 ng/mL.



HepG2 (human hepatocellular carcinoma cells) were cultured in DMEM supplemented with 10% fetal bovine serum, 2.5 mM L-glutamine, 100 U/mL penicillin, and 100 µg/mL streptomycin sulfate. An aliquot of the cell culture supernate was removed, assayed for human C3/C3b/C3c, and measured 620.71 ng/mL.



Plasma of six individual healthy human donors was measured. The human C3/C3b/C3c concentration of detected samples was determined to be 2,175.94 µg/mL with a range of 1,379.7 - 3,080.62 µg/mL.



Sandwich ELISA standard curve of MP03006-2, Human C3/C3b/C3c Recombinant Matched Antibody Pair - PBS only. 87386-5-PBS was coated to a plate as the capture antibody and incubated with serial dilutions of standard Eg4880. 87386-4-PBS was HRP conjugated as the detection antibody. Range: 0.156-10 ng/mL