

For Research Use Only

ARPC1B Recombinant monoclonal antibody, PBS Only (Capture)

Catalog Number: 87393-1-PBS



Basic Information

Catalog Number: 87393-1-PBS	GenBank Accession Number: BC007555	Purification Method: Protein A purification
Size: 100ug, Concentration: 1 mg/ml by Nanodrop;	GeneID (NCBI): 10095	CloneNo.: 252807F12
Source: Rabbit	UNIPROT ID: O15143	
Isotype: IgG	Full Name: actin related protein 2/3 complex, subunit 1B, 41kDa	
Immunogen Catalog Number: AG29001	Calculated MW: 41 kDa	
	Observed MW: 37 kDa	

Applications

Tested Applications:
WB, IP, Cytometric bead array, Indirect ELISA

Species Specificity:
human, mouse, rat

Product Information

87393-1-PBS targets ARPC1B as part of a matched antibody pair:

MP02990-1: 87393-1-PBS capture and 87393-3-PBS detection (validated in Cytometric bead array)

Unconjugated rabbit recombinant monoclonal antibody in PBS only (BSA and azide free) storage buffer at a concentration of 1 mg/mL, ready for conjugation. Created using Proteintech's proprietary in-house recombinant technology. Recombinant production enables unrivalled batch-to-batch consistency, easy scale-up, and future security of supply.

This conjugation ready format makes antibodies ideal for use in many applications including: ELISAs, multiplex assays requiring matched pairs, mass cytometry, and multiplex imaging applications. Antibody use should be optimized by the end user for each application and assay.

Background Information

ARPC1B also known as ARC41, p41-ARC, or p40-ARC, is one of seven subunits of the human Arp2/3 protein complex, that belongs to the SOP2 family. ARPC1B localizes on centrosomes and has a distinct role in centrosomal homeostasis. ARPC1B is both a physiological activator and substrate of Aurora A kinase, and these interactions help to maintain mitotic integrity in mammalian cells. In recent research, ARPC1B is selected as a candidate prediction marker for sensitivity of Choroidal malignant melanomas to radiotherapy.

Storage

Storage:
Store at -80°C.
Storage Buffer:
PBS only, pH7.3

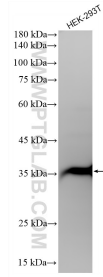
For technical support and original validation data for this product please contact:

T: 1 (888) 4PTGLAB (1-888-478-4522) (toll free in USA), or 1(312) 455-8498 (outside USA)

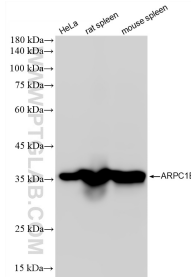
E: proteintech@ptglab.com
W: ptglab.com

This product is exclusively available under Proteintech Group brand and is not available to purchase from any other manufacturer.

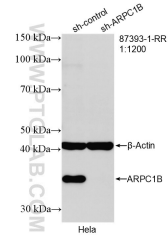
Selected Validation Data



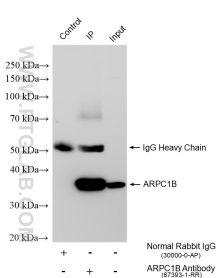
HEK-293T cells were subjected to SDS PAGE followed by western blot with 87393-1-RR (ARPC1B antibody) at dilution of 1:20000 incubated at room temperature for 1.5 hours. This data was developed using the same antibody clone with 87393-1-PBS in a different storage buffer formulation.



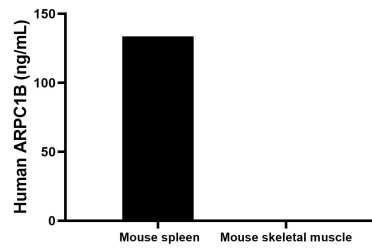
Various lysates were subjected to SDS PAGE followed by western blot with 87393-1-RR (ARPC1B antibody) at dilution of 1:20000 incubated at room temperature for 1.5 hours. This data was developed using the same antibody clone with 87393-1-PBS in a different storage buffer formulation.



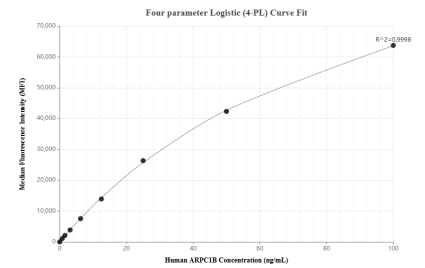
WB result of ARPC1B (87393-1-RR; 1:1200; incubated at room temperature for 1.5 hours) with sh-Control and sh-ARPC1B transfected HeLa cells. This data was developed using the same antibody clone with 87393-1-PBS in a different storage buffer formulation.



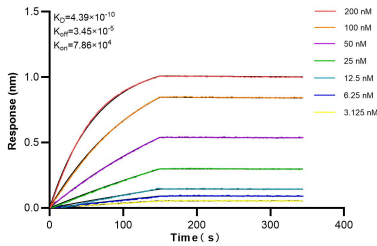
IP result of anti-ARPC1B (IP:87393-1-RR, 4ug; Detection:87393-1-RR 1:5000) with HeLa cells lysate 1200 ug. This data was developed using the same antibody clone with 87393-1-PBS in a different storage buffer formulation.



The mean ARPC1B concentration was determined to be 133.6 ng/mL in Mouse spleen tissue extract based on a 6.4 mg/mL extract load. Mouse skeletal muscle tissue extract were served as a negative control.



Cytometric bead array standard curve of MP02990-1, ARPC1B Recombinant Matched Antibody Pair, PBS Only. Capture antibody: 87393-1-PBS. Detection antibody: 87393-3-PBS. Standard: Ag29001. Range: 0.781-100 ng/mL.



Bi-layer interferometry (BLI) kinetic assays of 87393-1-RR against Human ARPC1B were performed. The affinity constant is 0.439 nM.