

For Research Use Only

# ARPC1B Recombinant monoclonal antibody

Catalog Number:87393-1-RR



## Basic Information

<b>Catalog Number:</b> 87393-1-RR	<b>GenBank Accession Number:</b> BC007555	<b>Purification Method:</b> Protein A purification
<b>Size:</b> 100ul , Concentration: 1000 µg/ml by Nanodrop;	<b>GeneID (NCBI):</b> 10095	<b>CloneNo.:</b> 252807F12
<b>Source:</b> Rabbit	<b>UNIPROT ID:</b> O15143	<b>Recommended Dilutions:</b> WB: 1:5000-1:50000 IP: 0.5-4.0 ug for 1.0-3.0 mg of total protein lysate
<b>Isotype:</b> IgG	<b>Full Name:</b> actin related protein 2/3 complex, subunit 1B, 41kDa	
<b>Immunogen Catalog Number:</b> AG29001	<b>Calculated MW:</b> 41 kDa	
	<b>Observed MW:</b> 37 kDa	

## Applications

<b>Tested Applications:</b> WB, IP, ELISA	<b>Positive Controls:</b>
<b>Species Specificity:</b> human, mouse, rat	<b>WB :</b> HeLa cells, HEK-293T cells, rat spleen tissue, mouse spleen tissue
	<b>IP :</b> HeLa cells,

## Background Information

ARPC1B also known as ARC41, p41-ARC, or p40-ARC, is one of seven subunits of the human Arp2/3 protein complex, that belongs to the SOP2 family. ARPC1B localizes on centrosomes and has a distinct role in centrosomal homeostasis. ARPC1B is both a physiological activator and substrate of Aurora A kinase, and these interactions help to maintain mitotic integrity in mammalian cells. In recent resaeach, ARPC1B is selected as a candidate prediction marker for sensitivity of Choroidal malignant melanomas to radiotherapy.

## Storage

**Storage:**  
Store at -20°C. Stable for one year after shipment.  
**Storage Buffer:**  
PBS with 0.02% sodium azide and 50% glycerol, pH7.3  
Aliquoting is unnecessary for -20°C storage

\*\*\* 20ul sizes contain 0.1% BSA

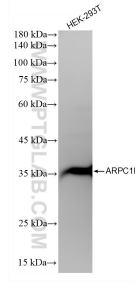
For technical support and original validation data for this product please contact:

T: 1 (888) 4PTGLAB (1-888-478-4522) (toll free in USA), or 1(312) 455-8498 (outside USA)

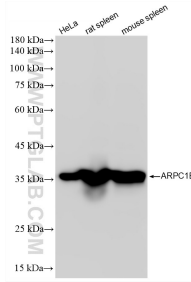
E: [proteintech@ptglab.com](mailto:proteintech@ptglab.com)  
W: [ptglab.com](http://ptglab.com)

This product is exclusively available under Proteintech Group brand and is not available to purchase from any other manufacturer.

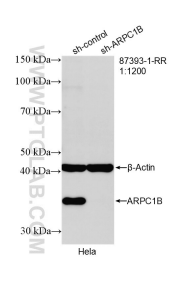
## Selected Validation Data



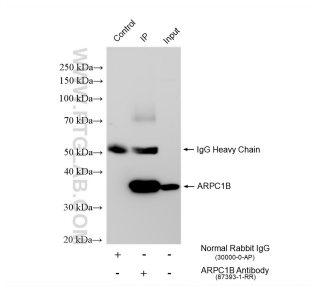
HEK-293T cells were subjected to SDS PAGE followed by western blot with 87393-1-RR (ARPC1B antibody) at dilution of 1:20000 incubated at room temperature for 1.5 hours.



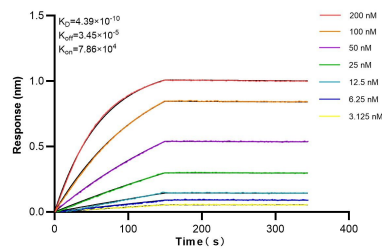
Various lysates were subjected to SDS PAGE followed by western blot with 87393-1-RR (ARPC1B antibody) at dilution of 1:20000 incubated at room temperature for 1.5 hours.



WB result of ARPC1B antibody (87393-1-RR; 1:1200; incubated at room temperature for 1.5 hours) with sh-Control and sh-ARPC1B transfected HeLa cells.



IP result of anti-ARPC1B (IP:87393-1-RR, 4ug; Detection:87393-1-RR 1:5000) with HeLa cells lysate 1200 ug.



Biolayer interferometry (BLI) kinetic assays of 87393-1-RR against Human ARPC1B were performed. The affinity constant is 0.439 nM.