

For Research Use Only

OPN4 Recombinant monoclonal antibody

Catalog Number: 87397-1-RR



Basic Information

Catalog Number: 87397-1-RR	GenBank Accession Number: BC113558	Purification Method: Protein A purification
Size: 100ul , Concentration: 1000 µg/ml by Nanodrop;	GeneID (NCBI): 94233	CloneNo.: 251643A9
Source: Rabbit	UNIPROT ID: Q9UHM6	Recommended Dilutions: WB: 1:1000-1:8000
Isotype: IgG	Full Name: opsin 4	
	Calculated MW: 478 aa, 53 kDa	
	Observed MW: 53 kDa	

Applications

Tested Applications: WB, ELISA	Positive Controls: WB : mouse eye tissue,
Species Specificity: human, mouse	

Background Information

OPN4, an opsin that was first isolated from the skin of *Xenopus laevis* in 1998, belongs not to the vertebrate-type opsin family but rather to the invertebrate-type opsins, which are part of the seven-transmembrane G protein-coupled receptor (GPCR) family (PMID:31989708). In humans, OPN4 is expressed in the retinal ganglion cells in addition to part of the brain (PMID:10632589). Moreover, Opn4 functions as a photoreceptor by detecting brightness levels and discriminating visual signals (PMID:22633808). Opn4 also facilitates visual circuits to acquire optimal settings and light adaptation by measuring irradiance levels (PMID:25517373).

Storage

Storage:
Store at -20°C. Stable for one year after shipment.
Storage Buffer:
PBS with 0.02% sodium azide and 50% glycerol, pH7.3
Aliquoting is unnecessary for -20°C storage

*** 20ul sizes contain 0.1% BSA

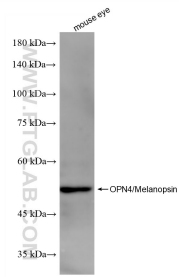
For technical support and original validation data for this product please contact:

T: 1 (888) 4PTGLAB (1-888-478-4522) (toll free in USA), or 1(312) 455-8498 (outside USA)

E: proteintech@ptglab.com
W: ptglab.com

This product is exclusively available under Proteintech Group brand and is not available to purchase from any other manufacturer.

Selected Validation Data



mouse eye tissue were subjected to SDS PAGE followed by western blot with 87397-1-RR (OPN4 antibody) at dilution of 1:4000 incubated at room temperature for 1.5 hours.