

For Research Use Only

CD1e Recombinant monoclonal antibody

Catalog Number: 87398-1-RR



Basic Information

Catalog Number: 87398-1-RR	GenBank Accession Number: GeneID (NCBI): UNIPROT ID: P15812	Purification Method: Protein A purification
Size: 100ul , Concentration: 1000 µg/ml by Nanodrop;	Full Name: Observed MW: 27 kDa, 30-45 kDa	CloneNo.: 252400H8
Source: Rabbit		Recommended Dilutions: WB: 1:2000-1:10000 IF/ICC: 1:250-1:1000
Isotype: IgG		
Immunogen Catalog Number: EG9185		

Applications

Tested Applications: WB, IF/ICC, ELISA	Positive Controls: WB : Jurkat cells, MOLT-4 cells
Species Specificity: human	IF/ICC : Jurkat cells,

Background Information

CD1e molecule (CD1e, also known as R2 and CD1A) is a member of the CD1 family of transmembrane glycoproteins, which are structurally related to the major histocompatibility complex (MHC) proteins and form heterodimers with beta-2-microglobulin (PMID: 10948205). The discoverers of the CD1 locus originally separated CD1 proteins into group 1 (CD1a, CD1b, and CD1c) and group 2 (CD1d), based on amino acid sequence homology (PMID: 2467814). CD1e is an important modulator of group 1 and group 2 CD1-restricted responses influencing the lipid antigen availability and the generation and persistence of CD1-lipid complexes (PMID: 21844346). CD1e may exhibit varying degrees of molecular weight migration in immunoblotting due to differences in glycosylation modification levels. The molecular weight of non N-glycosylated CD1e is 27 kDa (PMID: 19196239).

Storage

Storage:
Store at -20°C. Stable for one year after shipment.
Storage Buffer:
PBS with 0.02% sodium azide and 50% glycerol, pH7.3
Aliquoting is unnecessary for -20°C storage

*** 20ul sizes contain 0.1% BSA

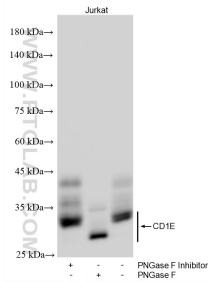
For technical support and original validation data for this product please contact:

T: 1 (888) 4PTGLAB (1-888-478-4522) (toll free in USA), or 1(312) 455-8498 (outside USA)

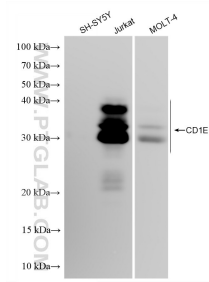
E: proteintech@ptglab.com
W: ptglab.com

This product is exclusively available under Proteintech Group brand and is not available to purchase from any other manufacturer.

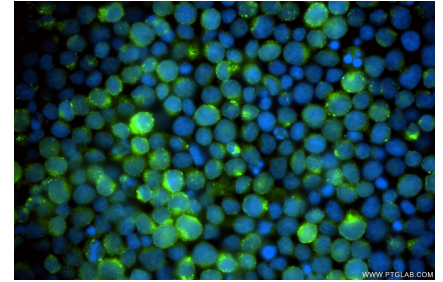
Selected Validation Data



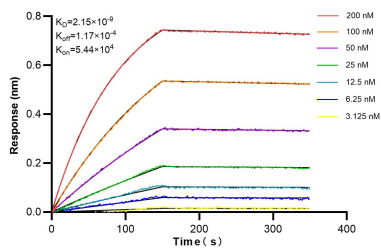
Jurkat cells were subjected to SDS PAGE followed by western blot with 87398-1-RR (CD1e antibody) at dilution of 1:5000 incubated at room temperature for 1.5 hours.



Various lysates were subjected to SDS PAGE followed by western blot with 87398-1-RR (CD1e antibody) at dilution of 1:5000 incubated at room temperature for 1.5 hours.



Immunofluorescent analysis of (4% PFA) fixed Jurkat cells using CD1e antibody (87398-1-RR, Clone: 252400H8) at dilution of 1:500 and CoraLite®488-Conjugated Goat Anti-Rabbit IgG(H+L) (SA00013-2).



Biolayer interferometry (BLI) kinetic assays of 87398-1-RR against Human CD1e were performed. The affinity constant is 2.15 nM.