

For Research Use Only

Mouse Ly-6A/E (Sca-1) Recombinant monoclonal antibody, PBS Only (Detector)

Catalog Number: 87403-2-PBS



Basic Information

Catalog Number: 87403-2-PBS	GenBank Accession Number: NM_001271416.1	Purification Method: Protein A purification
Size: 100ug , Concentration: 1 mg/ml by Nanodrop;	GeneID (NCBI): 110454	CloneNo.: 252494A2
Source: Rabbit	UNIPROT ID: P05533	
Isotype: IgG	Full Name: lymphocyte antigen 6 complex, locus A	
Immunogen Catalog Number: EG4270	Calculated MW: 14 kDa	

Applications

Tested Applications:
Sandwich ELISA, Indirect ELISA

Species Specificity:
mouse

Product Information

87403-2-PBS targets Ly-6A/E (Sca-1) as part of a matched antibody pair:

MP03064-1: 87403-3-PBS capture and 87403-2-PBS detection (validated in Sandwich ELISA)

Unconjugated rabbit recombinant monoclonal antibody in PBS only (BSA and azide free) storage buffer at a concentration of 1 mg/mL, ready for conjugation. Created using Proteintech's proprietary in-house recombinant technology. Recombinant production enables unrivalled batch-to-batch consistency, easy scale-up, and future security of supply.

This conjugation ready format makes antibodies ideal for use in many applications including: ELISAs, multiplex assays requiring matched pairs, mass cytometry, and multiplex imaging applications. Antibody use should be optimized by the end user for each application and assay.

Storage

Storage:
Store at -80°C.

Storage Buffer:
PBS only, pH7.3

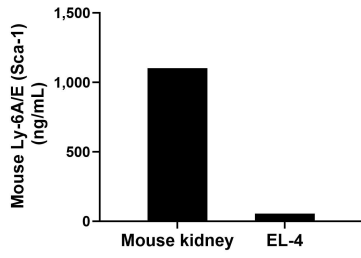
For technical support and original validation data for this product please contact:

T: 1 (888) 4PTGLAB (1-888-478-4522) (toll free in USA), or 1(312) 455-8498 (outside USA)

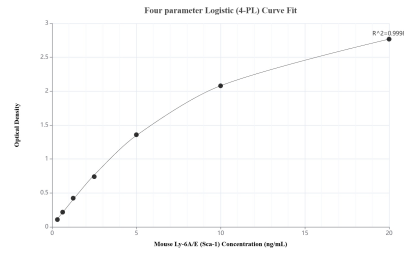
E: proteintech@ptglab.com
W: ptglab.com

This product is exclusively available under Proteintech Group brand and is not available to purchase from any other manufacturer.

Selected Validation Data



The mean Ly-6A/E (Sca-1) concentration was determined to be 1,101.47 ng/mL in mouse kidney extract based on a 8.40 mg/mL extract load and 54.43 ng/mL in EL-4 cell extract based on a 3.70 mg/mL extract load.



Sandwich ELISA standard curve of MP03064-1, Mouse Ly-6A/E (Sca-1) Recombinant Matched Antibody Pair - PBS only. 87403-3-PBS was coated to a plate as the capture antibody and incubated with serial dilutions of standard Eg4270. 87403-2-PBS was HRP conjugated as the detection antibody. Range: 0.313-20 ng/mL.