

For Research Use Only

PPM1E Recombinant monoclonal antibody, PBS Only

Catalog Number: 87405-1-PBS



Basic Information

Catalog Number:

87405-1-PBS

Size:

100ug, Concentration: 1 mg/ml by Nanodrop;

Source:

Rabbit

Isotype:

IgG

Immunogen Catalog Number:

AG18903

GenBank Accession Number:

BC136290

GeneID (NCBI):

22843

UNIPROT ID:

Q8WY54

Full Name:

protein phosphatase 1E (PP2C domain containing)

Calculated MW:

764 aa, 85 kDa

Observed MW:

85 kDa

Purification Method:

Protein A purification

CloneNo.:

252801H3

Applications

Tested Applications:

WB, Indirect ELISA

Species Specificity:

human, mouse, rat

Background Information

Ca²⁺/calmodulin-dependent protein kinase phosphatase (CaMKP-N), also known as PPM1E, is an AMPKα phosphatase, which is up-regulated in human gastric cancer tissues (PMID: 28423719).

Storage

Storage:

Store at -80°C.

Storage Buffer:

PBS only, pH7.3

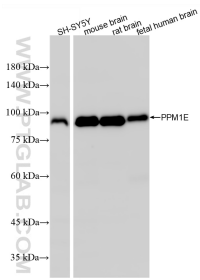
For technical support and original validation data for this product please contact:

T: 1 (888) 4PTGLAB (1-888-478-4522) (toll free in USA), or 1(312) 455-8498 (outside USA)

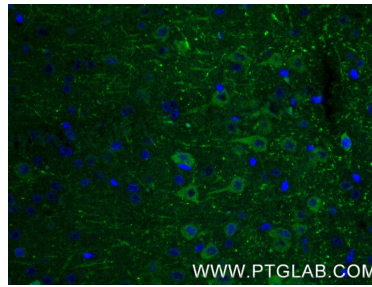
E: proteintech@ptglab.com
W: ptglab.com

This product is exclusively available under Proteintech Group brand and is not available to purchase from any other manufacturer.

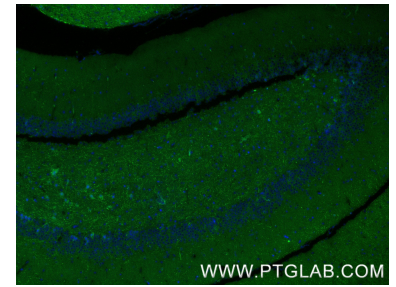
Selected Validation Data



Various lysates were subjected to SDS PAGE followed by western blot with 87405-1-RR (PPM1E antibody) at dilution of 1:10000 incubated at room temperature for 1.5 hours. This data was developed using the same antibody clone with 87405-1-PBS in a different storage buffer formulation.



Immunofluorescent analysis of (4% PFA) fixed paraffin-embedded mouse brain tissue using PPM1E antibody (87405-1-RR, Clone: 252801H3) at dilution of 1:500 and CoraLite®488-Conjugated Goat Anti-Rabbit IgG(H+L) (SA00013-2). Heat mediated antigen retrieval with Tris-EDTA buffer (pH 9.0). This data was developed using the same antibody clone with 87405-1-PBS in a different storage buffer formulation.



Immunofluorescent analysis of (4% PFA) fixed paraffin-embedded mouse brain tissue using PPM1E antibody (87405-1-RR, Clone: 252801H3) at dilution of 1:500 and CoraLite®488-Conjugated Goat Anti-Rabbit IgG(H+L) (SA00013-2). Heat mediated antigen retrieval with Tris-EDTA buffer (pH 9.0). This data was developed using the same antibody clone with 87405-1-PBS in a different storage buffer formulation.