

For Research Use Only

PPM1E Recombinant monoclonal antibody

Catalog Number: 87405-1-RR



Basic Information

Catalog Number: 87405-1-RR	GenBank Accession Number: BC136290	Purification Method: Protein A purification
Size: 100ul , Concentration: 1000 µg/ml by Nanodrop;	GeneID (NCBI): 22843	CloneNo.: 252801H3
Source: Rabbit	UNIPROT ID: Q8WY54	Recommended Dilutions: WB: 1:5000-1:50000 IF-P: 1:250-1:1000
Isotype: IgG	Full Name: protein phosphatase 1E (PP2C domain containing)	
Immunogen Catalog Number: AG18903	Calculated MW: 764 aa, 85 kDa	
	Observed MW: 85 kDa	

Applications

Tested Applications: WB, IF-P, ELISA	Positive Controls:
Species Specificity: human, mouse, rat	WB: SH-SY5Y cells, mouse brain tissue, rat brain tissue, fetal human brain tissue
	IF-P: mouse brain tissue,

Background Information

Ca²⁺/calmodulin-dependent protein kinase phosphatase (CaMKP-N), also known as PPM1E, is an AMPKα phosphatase, which is up-regulated in human gastric cancer tissues (PMID: 28423719).

Storage

Storage:
Store at -20°C. Stable for one year after shipment.
Storage Buffer:
PBS with 0.02% sodium azide and 50% glycerol, pH7.3
Aliquoting is unnecessary for -20°C storage

*** 20ul sizes contain 0.1% BSA

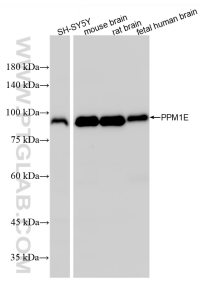
For technical support and original validation data for this product please contact:

T: 1 (888) 4PTGLAB (1-888-478-4522) (toll free in USA), or 1(312) 455-8498 (outside USA)

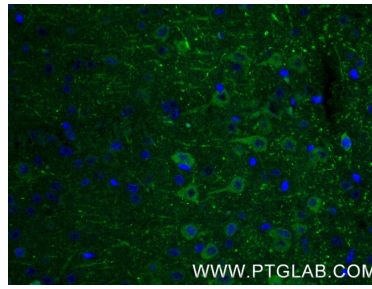
E: proteintech@ptglab.com
W: ptglab.com

This product is exclusively available under Proteintech Group brand and is not available to purchase from any other manufacturer.

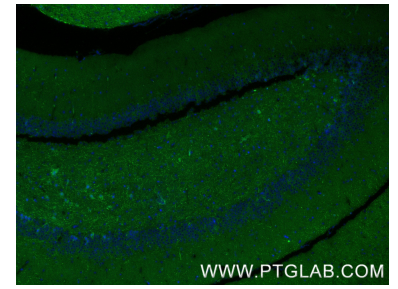
Selected Validation Data



Various lysates were subjected to SDS PAGE followed by western blot with 87405-1-RR (PPM1E antibody) at dilution of 1:10000 incubated at room temperature for 1.5 hours.



Immunofluorescent analysis of (4% PFA) fixed paraffin-embedded mouse brain tissue using PPM1E antibody (87405-1-RR, Clone: 252801H3) at dilution of 1:500 and CoraLite®488-Conjugated Goat Anti-Rabbit IgG(H+L) (SA00013-2). Heat mediated antigen retrieval with Tris-EDTA buffer (pH 9.0).



Immunofluorescent analysis of (4% PFA) fixed paraffin-embedded mouse brain tissue using PPM1E antibody (87405-1-RR, Clone: 252801H3) at dilution of 1:500 and CoraLite®488-Conjugated Goat Anti-Rabbit IgG(H+L) (SA00013-2). Heat mediated antigen retrieval with Tris-EDTA buffer (pH 9.0).