

For Research Use Only

PPM1E Recombinant monoclonal antibody, PBS Only (Detector)

Catalog Number: 87405-2-PBS



Basic Information

Catalog Number: 87405-2-PBS	GenBank Accession Number: BC136290	Purification Method: Protein A purification
Size: 100ug, Concentration: 1 mg/ml by Nanodrop;	GeneID (NCBI): 22843	CloneNo.: 252801C12
Source: Rabbit	UNIPROT ID: Q8WY54	
Isotype: IgG	Full Name: protein phosphatase 1E (PP2C domain containing)	
Immunogen Catalog Number: AG18903	Calculated MW: 764 aa, 85 kDa	

Applications

Tested Applications:
Cytometric bead array, Indirect ELISA

Species Specificity:
human

Product Information

87405-2-PBS targets PPM1E as part of a matched antibody pair:

MP03018-1: 87405-3-PBS capture and 87405-2-PBS detection (validated in Cytometric bead array)

Unconjugated rabbit recombinant monoclonal antibody in PBS only (BSA and azide free) storage buffer at a concentration of 1 mg/mL, ready for conjugation. Created using Proteintech's proprietary in-house recombinant technology. Recombinant production enables unrivalled batch-to-batch consistency, easy scale-up, and future security of supply.

This conjugation ready format makes antibodies ideal for use in many applications including: ELISAs, multiplex assays requiring matched pairs, mass cytometry, and multiplex imaging applications. Antibody use should be optimized by the end user for each application and assay.

Storage

Storage:
Store at -80°C.

Storage Buffer:
PBS only, pH7.3

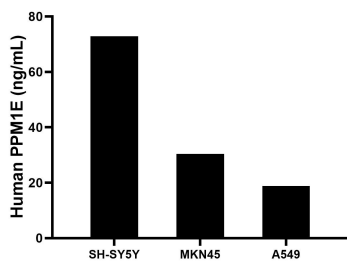
For technical support and original validation data for this product please contact:

T: 1 (888) 4PTGLAB (1-888-478-4522) (toll free in USA), or 1(312) 455-8498 (outside USA)

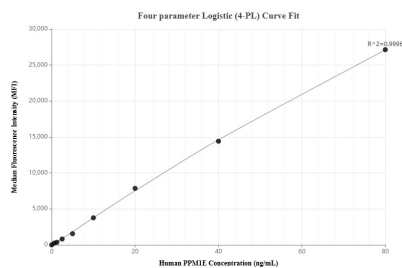
E: proteintech@ptglab.com
W: ptglab.com

This product is exclusively available under Proteintech Group brand and is not available to purchase from any other manufacturer.

Selected Validation Data



The mean PPM1E concentration was determined to be 72.9 ng/mL in SH-SY5Y cell extract based on a 1.2 mg/mL extract load, 30.4 ng/mL in MKN45 cell extract based on a 1.2 mg/mL extract load, 18.8 ng/mL in A549 cell extract based on a 1.2 mg/mL extract load.



Cytometric bead array standard curve of MP03018-1, PPM1E Recombinant Matched Antibody Pair, PBS Only. Capture antibody: 87405-3-PBS. Detection antibody: 87405-2-PBS. Standard: Ag18903. Range: 0.625-80 ng/mL.