

For Research Use Only

# Mouse Integrin alpha-8 Recombinant monoclonal antibody, PBS Only

Catalog Number:87408-1-PBS



## Basic Information

<b>Catalog Number:</b> 87408-1-PBS	<b>GenBank Accession Number:</b> GeneID (NCBI): 241226	<b>Purification Method:</b> Protein A purification
<b>Size:</b> 100ug , Concentration: 1 mg/ml by Nanodrop;	<b>UNIPROT ID:</b> A2ARA8	<b>CloneNo.:</b> 252745D11
<b>Source:</b> Rabbit	<b>Full Name:</b> integrin alpha 8	
<b>Isotype:</b> IgG	<b>Calculated MW:</b> 117 kDa	
<b>Immunogen Catalog Number:</b> EG10469	<b>Observed MW:</b> 140 kDa	

## Applications

**Tested Applications:**  
WB, IF-P, Indirect ELISA

**Species Specificity:**  
human, mouse, rat

## Background Information

Integrins are cell adhesion receptors that are heterodimers composed of non-covalently associated  $\alpha$  and  $\beta$  subunits. Integrin alpha-8 is a single-pass type I membrane protein that forms a heterodimer with integrin beta-1 to serve as a receptor for RGD-containing matrix molecules (fibronectin, vitronectin, tenascin C, osteopontin, and nephronectin) (PMID: 33000355). Integrin alpha-8 beta-1 plays a critical role in epithelial-mesenchymal interactions and functions in the genesis of kidney and probably of other organs (PMID: 9054500; 19769957). The apparent molecular weight of integrin alpha-8 is larger than the calculated molecular weight of 117 kDa, possibly due to glycosylation (PMID: 7768999).

## Storage

**Storage:**  
Store at -80°C.

**Storage Buffer:**  
PBS only, pH7.3

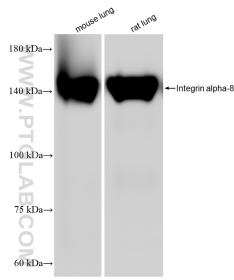
For technical support and original validation data for this product please contact:

T: 1 (888) 4PTGLAB (1-888-478-4522) (toll free in USA), or 1(312) 455-8498 (outside USA)

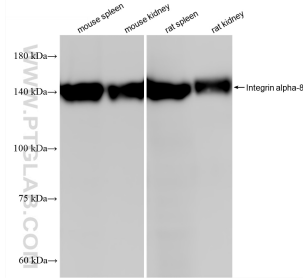
E: [proteintech@ptglab.com](mailto:proteintech@ptglab.com)  
W: [ptglab.com](http://ptglab.com)

**This product is exclusively available under Proteintech Group brand and is not available to purchase from any other manufacturer.**

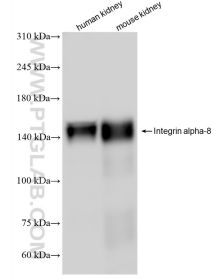
## Selected Validation Data



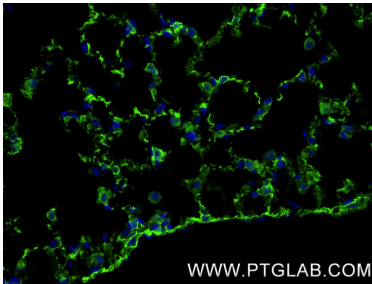
Various lysates were subjected to SDS PAGE followed by western blot with 87408-1-RR (Integrin alpha-8 antibody) at dilution of 1:20000 incubated at room temperature for 1.5 hours. This data was developed using the same antibody clone with 87408-1-PBS in a different storage buffer formulation.



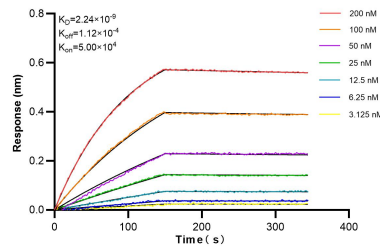
Various lysates were subjected to SDS PAGE followed by western blot with 87408-1-RR (Integrin alpha-8 antibody) at dilution of 1:20000 incubated at room temperature for 1.5 hours. This data was developed using the same antibody clone with 87408-1-PBS in a different storage buffer formulation.



Various lysates were subjected to SDS PAGE followed by western blot with 87408-1-RR (Integrin alpha-8 antibody) at dilution of 1:10000 incubated at room temperature for 1.5 hours. This data was developed using the same antibody clone with 87408-1-PBS in a different storage buffer formulation.



Immunofluorescent analysis of (4% PFA) fixed paraffin-embedded mouse lung tissue using Integrin alpha-8 antibody (87408-1-RR, Clone: 252745D11) at dilution of 1:1000 and CoraLite®488-Conjugated Goat Anti-Rabbit IgG(H+L) (SA00013-2). Heat mediated antigen retrieval with Tris-EDTA buffer (pH 9.0). This data was developed using the same antibody clone with 87408-1-PBS in a different storage buffer formulation.



Biolayer interferometry (BLI) kinetic assays of 87408-1-RR against Mouse Integrin alpha 8 were performed. The affinity constant is 2.24 nM.