

For Research Use Only

Integrin alpha-8 Recombinant monoclonal antibody

Catalog Number:87408-1-RR



Basic Information

Catalog Number:

87408-1-RR

Size:

100ul , Concentration: 1000 µg/ml by Nanodrop;

Source:

Rabbit

Isotype:

IgG

Immunogen Catalog Number:

EG10469

GenBank Accession Number:

GeneID (NCBI):

241226

UNIPROT ID:

A2ARA8

Full Name:

integrin alpha 8

Calculated MW:

117 kDa

Observed MW:

140 kDa

Purification Method:

Protein A purification

CloneNo.:

252745D11

Recommended Dilutions:

WB: 1:5000-1:50000

IF-P: 1:500-1:2000

Applications

Tested Applications:

WB, IF-P, ELISA

Species Specificity:

human, mouse, rat

Positive Controls:

WB : mouse spleen tissue, human kidney tissue, mouse lung tissue, mouse kidney tissue, rat lung tissue, rat spleen tissue, rat kidney tissue

IF-P : mouse lung tissue,

Background Information

Integrins are cell adhesion receptors that are heterodimers composed of non-covalently associated α and β subunits. Integrin alpha-8 is a single-pass type I membrane protein that forms a heterodimer with integrin beta-1 to serve as a receptor for RGD-containing matrix molecules (fibronectin, vitronectin, tenascin C, osteopontin, and nephronectin) (PMID: 33000355). Integrin alpha-8 beta-1 plays a critical role in epithelial-mesenchymal interactions and functions in the genesis of kidney and probably of other organs (PMID: 9054500; 19769957). The apparent molecular weight of integrin alpha-8 is larger than the calculated molecular weight of 117 kDa, possibly due to glycosylation (PMID: 7768999).

Storage

Storage:

Store at -20°C. Stable for one year after shipment.

Storage Buffer:

PBS with 0.02% sodium azide and 50% glycerol, pH7.3

Aliquoting is unnecessary for -20°C storage

*** 20ul sizes contain 0.1% BSA

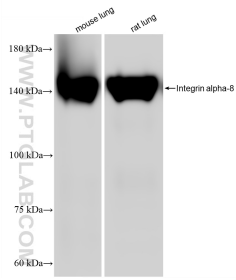
For technical support and original validation data for this product please contact:

T: 1 (888) 4PTGLAB (1-888-478-4522) (toll free in USA), or 1(312) 455-8498 (outside USA)

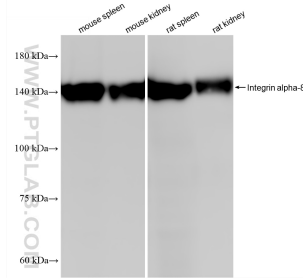
E: proteintech@ptglab.com
W: ptglab.com

This product is exclusively available under Proteintech Group brand and is not available to purchase from any other manufacturer.

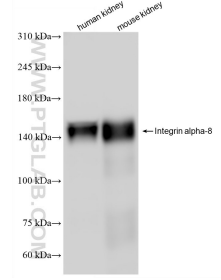
Selected Validation Data



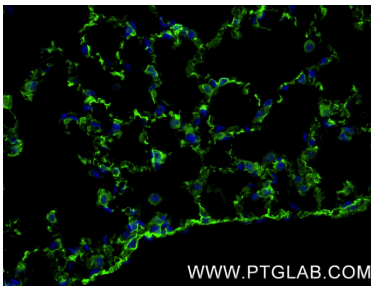
Various lysates were subjected to SDS PAGE followed by western blot with 87408-1-RR (Integrin alpha-8 antibody) at dilution of 1:20000 incubated at room temperature for 1.5 hours.



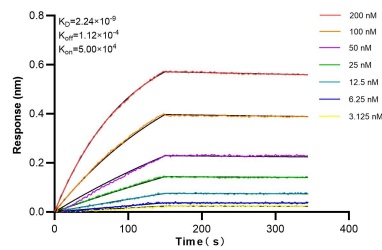
Various lysates were subjected to SDS PAGE followed by western blot with 87408-1-RR (Integrin alpha-8 antibody) at dilution of 1:20000 incubated at room temperature for 1.5 hours.



Various lysates were subjected to SDS PAGE followed by western blot with 87408-1-RR (Integrin alpha-8 antibody) at dilution of 1:10000 incubated at room temperature for 1.5 hours.



Immunofluorescent analysis of (4% PFA) fixed paraffin-embedded mouse lung tissue using Integrin alpha-8 antibody (87408-1-RR, Clone: 252745D11) at dilution of 1:1000 and CoraLite®488-Conjugated Goat Anti-Rabbit IgG(H+L) (SA00013-2). Heat mediated antigen retrieval with Tris-EDTA buffer (pH 9.0).



Biolayer interferometry (BLI) kinetic assays of 87408-1-RR against Mouse Integrin alpha 8 were performed. The affinity constant is 2.24 nM.