

For Research Use Only

ITB4 Recombinant monoclonal antibody, PBS Only (Capture)

Catalog Number: 87416-4-PBS



Basic Information

Catalog Number:

87416-4-PBS

Size:

100ug, Concentration: 1 mg/ml by Nanodrop;

Source:

Rabbit

Isotype:

IgG

Immunogen Catalog Number:

EG10479

GenBank Accession Number:

GeneID (NCBI):

3691

Full Name:

integrin, beta 4

Purification Method:

Protein A purification

CloneNo.:

252740A8

Applications

Tested Applications:

Cytometric bead array, Sandwich ELISA, Indirect ELISA

Species Specificity:

human

Product Information

87416-4-PBS targets ITB4 as part of a matched antibody pair.

MP03021-1: 87416-4-PBS capture and 87416-3-PBS detection (validated in Cytometric bead array, Sandwich ELISA)

Unconjugated rabbit recombinant monoclonal antibody in PBS only (BSA and azide free) storage buffer at a concentration of 1 mg/mL, ready for conjugation. Created using Proteintech's proprietary in-house recombinant technology. Recombinant production enables unrivalled batch-to-batch consistency, easy scale-up, and future security of supply.

This conjugation ready format makes antibodies ideal for use in many applications including: ELISAs, multiplex assays requiring matched pairs, mass cytometry, and multiplex imaging applications. Antibody use should be optimized by the end user for each application and assay.

Storage

Storage:

Store at -80°C.

Storage Buffer:

PBS only, pH7.3

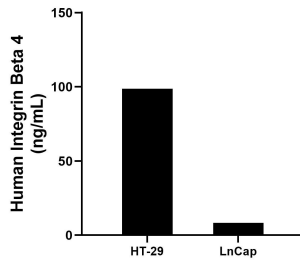
For technical support and original validation data for this product please contact:

T: 1 (888) 4PTGLAB (1-888-478-4522) (toll free in USA), or 1(312) 455-8498 (outside USA)

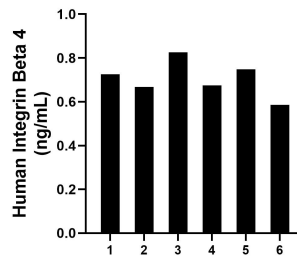
E: proteintech@ptglab.com
W: ptglab.com

This product is exclusively available under Proteintech Group brand and is not available to purchase from any other manufacturer.

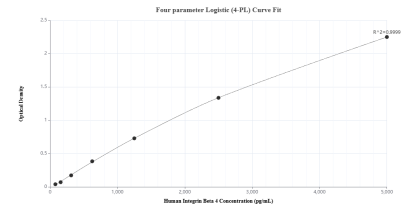
Selected Validation Data



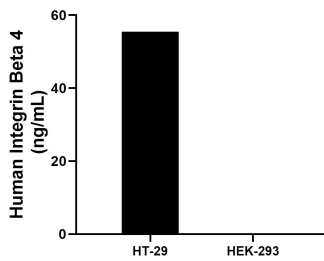
The mean Integrin Beta 4 concentration was determined to be 98.74 ng/mL in HT-29 cell extract based on a 1.1 mg/mL extract load and 8.34 ng/mL in LnCap cell extract based on a 1.2 mg/mL extract load.



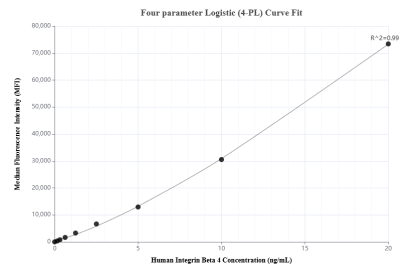
Plasma of six individual healthy human donors was measured. The human Integrin Beta 4 concentration of detected samples was determined to be 0.70 ng/mL with a range of 0.59 - 0.83 ng/mL.



Sandwich ELISA standard curve of MP03021-1, Human Integrin Beta 4 Recombinant Matched Antibody Pair - PBS only. 87416-4-PBS was coated to a plate as the capture antibody and incubated with serial dilutions of standard Eg4880. 87416-3-PBS was HRP conjugated as the detection antibody. Range: 78.1-5000 pg/mL



The mean Integrin Beta 4 concentration was determined to be 55.5 ng/mL in HT-29 cell extract based on a 1.7 mg/mL extract load, HEK-293 cell extract were served as a negative control.



Cytometric bead array standard curve of MP03021-1, Integrin Beta 4 Recombinant Matched Antibody Pair, PBS Only. Capture antibody: 87416-4-PBS. Detection antibody: 87416-3-PBS. Standard: Eg10479. Range: 0.156-20 ng/mL