

For Research Use Only

Mouse ITAM Recombinant monoclonal antibody, PBS Only (Detector)

Catalog Number: 87419-7-PBS



Basic Information

Catalog Number:

87419-7-PBS

Size:

100ug , Concentration: 1 mg/ml by Nanodrop;

Source:

Rabbit

Isotype:

IgG

Immunogen Catalog Number:

EG10463

GenBank Accession Number:

GeneID (NCBI):

16409

Full Name:

integrin alpha M

Purification Method:

Protein A purification

CloneNo.:

252750E6

Applications

Tested Applications:

Sandwich ELISA, Indirect ELISA

Species Specificity:

mouse

Product Information

87419-7-PBS targets ITAM as part of a matched antibody pair:

MP03033-2: 87419-6-PBS capture and 87419-7-PBS detection (validated in Sandwich ELISA)

Unconjugated rabbit recombinant monoclonal antibody in PBS only (BSA and azide free) storage buffer at a concentration of 1 mg/mL, ready for conjugation. Created using Proteintech's proprietary in-house recombinant technology. Recombinant production enables unrivalled batch-to-batch consistency, easy scale-up, and future security of supply.

This conjugation ready format makes antibodies ideal for use in many applications including: ELISAs, multiplex assays requiring matched pairs, mass cytometry, and multiplex imaging applications. Antibody use should be optimized by the end user for each application and assay.

Storage

Storage:

Store at -80°C.

Storage Buffer:

PBS only, pH7.3

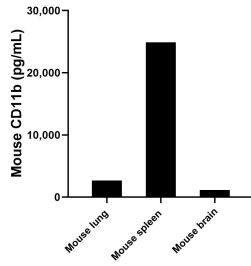
For technical support and original validation data for this product please contact:

T: 1 (888) 4PTGLAB (1-888-478-4522) (toll free in USA), or 1(312) 455-8498 (outside USA)

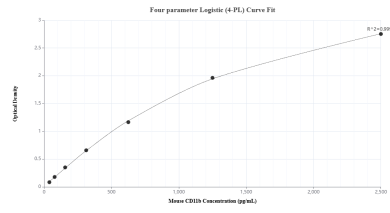
E: proteintech@ptglab.com
W: ptglab.com

This product is exclusively available under Proteintech Group brand and is not available to purchase from any other manufacturer.

Selected Validation Data



The mean CD11b concentration was determined to be 2,640.3 pg/mL in mouse lung tissue extract based on a 5.0 mg/mL, 24,896.3 pg/mL in mouse spleen tissue extract based on a 6.4 mg/mL extract load and 1,148.8 pg/mL in mouse brain tissue extract based on a 6.3 mg/mL extract load.



Sandwich ELISA standard curve of MP03033-2, Mouse CD11b Recombinant Matched Antibody Pair - PBS only. 87419-6-PBS was coated to a plate as the capture antibody and incubated with serial dilutions of standard Eg10463. 87419-7-PBS was HRP conjugated as the detection antibody. Range: 39-2500 pg/mL