

For Research Use Only

ATF1 Recombinant monoclonal antibody, PBS Only

Catalog Number: 87421-1-PBS



Basic Information

| | | |
|--|--|---|
| Catalog Number: 87421-1-PBS | GenBank Accession Number: BC029619 | Purification Method: Protein A purification |
| Size: 100ug, Concentration: 1 mg/ml by Nanodrop; | GeneID (NCBI): 466 | CloneNo.: 252816B3 |
| Source: Rabbit | UNIPROT ID: P18846 | |
| Isotype: IgG | Full Name: activating transcription factor 1 | |
| Immunogen Catalog Number: AG2548 | Calculated MW: 271 aa, 29 kDa | |
| | Observed MW: 35-40 kDa | |

Applications

Tested Applications:
WB, IF/ICC, Indirect ELISA

Species Specificity:
human, mouse

Background Information

TFs play a vital role in maintaining cell homeostasis by combining DNA regulatory sequences to regulate gene transcription rates. Activating transcription factor 1 (ATF1) is a member of the ATF/CREB family of transcription factors (TFs), specifically interacting with the consensus ATF/CRE site 'TGACGTCA' (PMID: 28032861). ATF1 transcriptionally regulates the expressions of target genes to mediate various cellular processes, and ATF1 effects the progression of tumors (including lung cancer, colorectal cancer, and nasopharyngeal carcinoma).

Storage

Storage:
Store at -80°C.

Storage Buffer:
PBS only, pH7.3

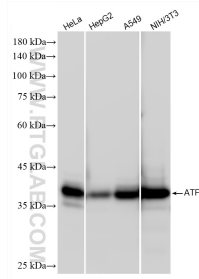
For technical support and original validation data for this product please contact:

T: 1 (888) 4PTGLAB (1-888-478-4522) (toll free in USA), or 1(312) 455-8498 (outside USA)

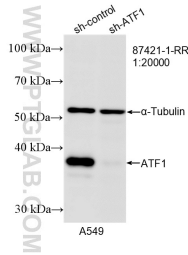
E: proteintech@ptglab.com
W: ptglab.com

This product is exclusively available under Proteintech Group brand and is not available to purchase from any other manufacturer.

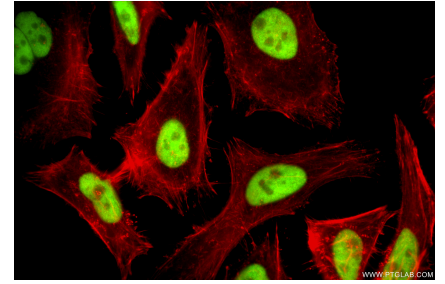
Selected Validation Data



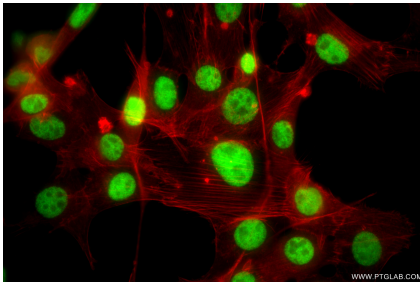
Various lysates were subjected to SDS PAGE followed by western blot with 87421-1-RR (ATF1 antibody) at dilution of 1:10000 incubated at room temperature for 1.5 hours. This data was developed using the same antibody clone with 87421-1-PBS in a different storage buffer formulation.



WB result of ATF1 antibody (87421-1-RR; 1:20000; incubated at room temperature for 1.5 hours) with sh-Control and sh-ATF1 transfected A549 cells. This data was developed using the same antibody clone with 87421-1-PBS in a different storage buffer formulation.



Immunofluorescent analysis of (4% PFA) fixed HeLa cells using ATF1 antibody (87421-1-RR, Clone: 252816B3) at dilution of 1:800 and CoraLite@488-Conjugated Goat Anti-Rabbit IgG(H+L) (SA00013-2), CL594-Phalloidin (red). This data was developed using the same antibody clone with 87421-1-PBS in a different storage buffer formulation.



Immunofluorescent analysis of (4% PFA) fixed NIH/3T3 cells using ATF1 antibody (87421-1-RR, Clone: 252816B3) at dilution of 1:800 and CoraLite@488-Conjugated Goat Anti-Rabbit IgG(H+L) (SA00013-2), CL594-Phalloidin (red). This data was developed using the same antibody clone with 87421-1-PBS in a different storage buffer formulation.