

For Research Use Only

ATF1 Recombinant monoclonal antibody

Catalog Number:87421-1-RR



Basic Information

Catalog Number: 87421-1-RR	GenBank Accession Number: BC029619	Purification Method: Protein A purification
Size: 100ul , Concentration: 1000 µg/ml by Nanodrop;	GeneID (NCBI): 466	CloneNo.: 252816B3
Source: Rabbit	UNIPROT ID: P18846	Recommended Dilutions: WB: 1:5000-1:50000 IF/ICC: 1:400-1:1600
Isotype: IgG	Full Name: activating transcription factor 1	
Immunogen Catalog Number: AG2548	Calculated MW: 271 aa, 29 kDa	
	Observed MW: 35-40 kDa	

Applications

Tested Applications: WB, IF/ICC, ELISA	Positive Controls: WB : HeLa cells, A549 cells, HepG2 cells, NIH/3T3 cells IF/ICC : HeLa cells, NIH/3T3 cells
Species Specificity: human, mouse	

Background Information

TFs play a vital role in maintaining cell homeostasis by combining DNA regulatory sequences to regulate gene transcription rates. Activating transcription factor 1 (ATF1) is a member of the ATF/CREB family of transcription factors (TFs), specifically interacting with the consensus ATF/CRE site 'TGACGTC' (PMID: 28032861). ATF1 transcriptionally regulates the expressions of target genes to mediate various cellular processes, and ATF1 effects the progression of tumors (including lung cancer, colorectal cancer, and nasopharyngeal carcinoma).

Storage

Storage:
Store at -20°C. Stable for one year after shipment.
Storage Buffer:
PBS with 0.02% sodium azide and 50% glycerol, pH7.3
Aliquoting is unnecessary for -20°C storage

*** 20ul sizes contain 0.1% BSA

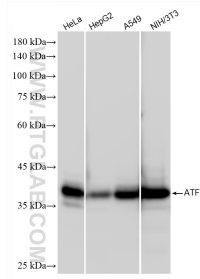
For technical support and original validation data for this product please contact:

T: 1 (888) 4PTGLAB (1-888-478-4522) (toll free in USA), or 1(312) 455-8498 (outside USA)

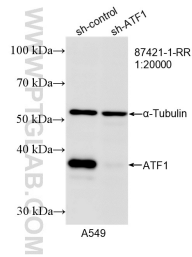
E: proteintech@ptglab.com
W: ptglab.com

This product is exclusively available under Proteintech Group brand and is not available to purchase from any other manufacturer.

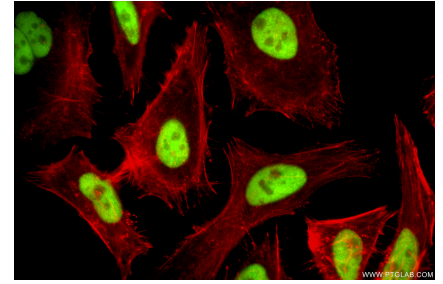
Selected Validation Data



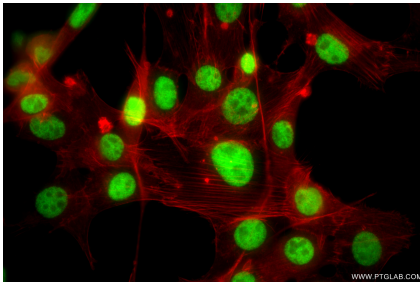
Various lysates were subjected to SDS PAGE followed by western blot with 87421-1-RR (ATF1 antibody) at dilution of 1:10000 incubated at room temperature for 1.5 hours.



WB result of ATF1 antibody (87421-1-RR; 1:20000; incubated at room temperature for 1.5 hours) with sh-Control and sh-ATF1 transfected A549 cells.



Immunofluorescent analysis of (4% PFA) fixed HeLa cells using ATF1 antibody (87421-1-RR, Clone: 252816B3) at dilution of 1:800 and CoraLite@488-Conjugated Goat Anti-Rabbit IgG(H+L) (SA00013-2), CL594-Phalloidin (red).



Immunofluorescent analysis of (4% PFA) fixed NIH/3T3 cells using ATF1 antibody (87421-1-RR, Clone: 252816B3) at dilution of 1:800 and CoraLite@488-Conjugated Goat Anti-Rabbit IgG(H+L) (SA00013-2), CL594-Phalloidin (red).