

For Research Use Only

# ZFYVE19 Recombinant monoclonal antibody, PBS Only

Catalog Number: 87425-2-PBS



## Basic Information

<b>Catalog Number:</b> 87425-2-PBS	<b>GenBank Accession Number:</b> BC015738	<b>Purification Method:</b> Protein A purification
<b>Size:</b> 100ug , Concentration: 1 mg/ml by Nanodrop;	<b>GeneID (NCBI):</b> 84936	<b>CloneNo.:</b> 252845F6
<b>Source:</b> Rabbit	<b>UNIPROT ID:</b> Q96K21	
<b>Isotype:</b> IgG	<b>Full Name:</b> zinc finger, FYVE domain containing 19	
<b>Immunogen Catalog Number:</b> AG19593	<b>Calculated MW:</b> 471 aa, 52 kDa	
	<b>Observed MW:</b> 45 kDa	

## Applications

**Tested Applications:**  
WB, Indirect ELISA

**Species Specificity:**  
human

## Background Information

ZFYVE19, also known as ANCHR, is a poorly characterized human protein. Recent clinical studies have linked biallelic loss-of-function mutations to a progressive familial intrahepatic cholestasis (PFIC) phenotype featuring neonatal-onset high-GGT cholestasis, congenital hepatic fibrosis, and sclerosing cholangiopathy. (PMID: 33853651)

## Storage

**Storage:**  
Store at -80°C.

**Storage Buffer:**  
PBS only, pH7.3

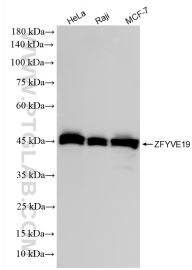
For technical support and original validation data for this product please contact:

T: 1 (888) 4PTGLAB (1-888-478-4522) (toll free in USA), or 1(312) 455-8498 (outside USA)

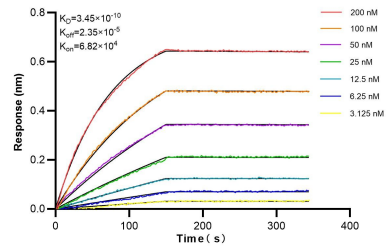
E: [proteintech@ptglab.com](mailto:proteintech@ptglab.com)  
W: [ptglab.com](http://ptglab.com)

**This product is exclusively available under Proteintech Group brand and is not available to purchase from any other manufacturer.**

## Selected Validation Data



Various lysates were subjected to SDS PAGE followed by western blot with 87425-2-RR (ZFYVE19 antibody) at dilution of 1:20000 incubated at room temperature for 1.5 hours. This data was developed using the same antibody clone with 87425-2-PBS in a different storage buffer formulation.



Biolayer interferometry (BLI) kinetic assays of 87425-2-RR against Human ZFYVE19 were performed. The affinity constant is 0.345 nM.