

For Research Use Only

OPRD1 Recombinant monoclonal antibody, PBS Only

Catalog Number: 87435-1-PBS



Basic Information

Catalog Number: 87435-1-PBS	GenBank Accession Number: NM_000911	Purification Method: Protein A purification
Size: 100ug, Concentration: 1 mg/ml by Nanodrop;	GeneID (NCBI): 4985	CloneNo.: 252703H3
Source: Rabbit	UNIPROT ID: P41143	
Isotype: IgG	Full Name: opioid receptor, delta 1	
	Observed MW: 45 kDa	

Applications

Tested Applications:
WB, Indirect ELISA

Species Specificity:
human, mouse

Background Information

Opioid receptor delta 1 (OPRD1), also known as the δ -opioid receptor (DOR), is a class A G protein-coupled receptor (GPCR) that mediates the biological effects of endogenous opioid peptides such as enkephalins. OPRD1 primarily couples to Gi/Go proteins, leading to inhibition of adenylyl cyclase, reduced intracellular cAMP production, modulation of ion channel activity, and suppression of neurotransmitter release. It is widely expressed in the central and peripheral nervous systems, including the cortex, striatum, hippocampus, spinal cord, and sensory neurons, where it regulates analgesia, mood, reward, emotional processing, and neuroprotection. Compared with other opioid receptors, OPRD1 has attracted particular interest as a target for pain management with potentially reduced respiratory depression and abuse liability, although its pharmacology is complex and context dependent. Dysregulated OPRD1 signaling has been implicated in chronic pain, depression, anxiety, addiction, epilepsy, and neuroinflammatory disorders.

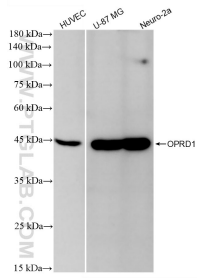
Storage

Storage:
Store at -80°C.
Storage Buffer:
PBS only, pH7.3

For technical support and original validation data for this product please contact:
T: 1 (888) 4PTGLAB (1-888-478-4522) (toll free in USA), or 1(312) 455-8498 (outside USA) E: proteintech@ptglab.com W: ptglab.com

This product is exclusively available under Proteintech Group brand and is not available to purchase from any other manufacturer.

Selected Validation Data



Various lysates were subjected to SDS PAGE followed by western blot with 87435-1-RR (OPRD1 antibody) at dilution of 1:5000 incubated at room temperature for 1.5 hours. This data was developed using the same antibody clone with 87435-1-PBS in a different storage buffer formulation.