

For Research Use Only

Ccr10 Recombinant monoclonal antibody

Catalog Number: 87436-1-RR



Basic Information

Catalog Number: 87436-1-RR	GenBank Accession Number: BC117043	Purification Method: Protein A purification
Size: 100ul , Concentration: 1000 ug/ml by Nanodrop;	GeneID (NCBI): 12777	CloneNo.: 252702D10
Source: Rabbit	UNIPROT ID: Q9JL21	Recommended Dilutions: WB: 1:2000-1:10000
Isotype: IgG	Full Name: chemokine (C-C motif) receptor 10	
	Observed MW: 35 kDa	

Applications

Tested Applications: WB, ELISA	Positive Controls: WB : mouse colon tissue, rat colon tissue
Species Specificity: mouse	

Background Information

Mouse Ccr10 is a Gi-coupled chemokine receptor that governs immune cell homing to skin and mucosal epithelia through recognition of Ccl27 and Ccl28. By directing T cells and IgA-secreting plasma cells to barrier tissues, Ccr10 plays a central role in cutaneous and mucosal immune surveillance. Genetic and functional studies in mice highlight Ccr10 as a key regulator of epithelial immunity and inflammatory balance.

Storage

Storage:
Store at -20°C. Stable for one year after shipment.
Storage Buffer:
PBS with 0.02% sodium azide and 50% glycerol, pH7.3
Aliquoting is unnecessary for -20°C storage

*** 20ul sizes contain 0.1% BSA

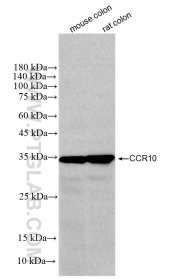
For technical support and original validation data for this product please contact:

T: 1 (888) 4PTGLAB (1-888-478-4522) (toll free in USA), or 1(312) 455-8498 (outside USA)

E: proteintech@ptglab.com
W: ptglab.com

This product is exclusively available under Proteintech Group brand and is not available to purchase from any other manufacturer.

Selected Validation Data



Various lysates were subjected to SDS PAGE followed by western blot with 87436-1-RR (Ccr10 antibody) at dilution of 1:5000 incubated at room temperature for 1.5 hours.