

For Research Use Only

SRp20 Recombinant monoclonal antibody, PBS Only

Catalog Number: 87438-1-PBS



Basic Information

Catalog Number: 87438-1-PBS	GenBank Accession Number: BC000914	Purification Method: Protein A purification
Size: 100ug, Concentration: 1 mg/ml by Nanodrop;	GeneID (NCBI): 6428	CloneNo.: 252792A4
Source: Rabbit	UNIPROT ID: P84103	
Isotype: IgG	Full Name: splicing factor, arginine/serine-rich 3	
Immunogen Catalog Number: AG1341	Calculated MW: 20 kDa	
	Observed MW: 20-24 kDa	

Applications

Tested Applications:
WB, Indirect ELISA

Species Specificity:
human, mouse, rat

Background Information

SFRS3, also named as SRSF3 and SRP20, belongs to the splicing factor SR family. It may be involved in RNA processing in relation with cellular proliferation and/or maturation. SFRS3 is one of the cognate factors. It is a proto-oncogene critical for cell proliferation and tumor induction and maintenance.

Storage

Storage:
Store at -80°C.

Storage Buffer:
PBS only, pH7.3

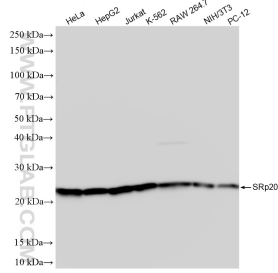
For technical support and original validation data for this product please contact:

T: 1 (888) 4PTGLAB (1-888-478-4522) (toll free in USA), or 1(312) 455-8498 (outside USA)

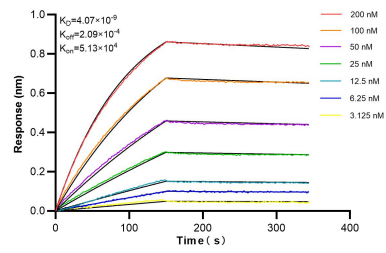
E: proteintech@ptglab.com
W: ptglab.com

This product is exclusively available under Proteintech Group brand and is not available to purchase from any other manufacturer.

Selected Validation Data



Various lysates were subjected to SDS PAGE followed by western blot with 87438-1-RR (SRp20 antibody) at dilution of 1:10000 incubated at room temperature for 1.5 hours. This data was developed using the same antibody clone with 87438-1-PBS in a different storage buffer formulation.



Biolayer interferometry (BLI) kinetic assays of 87438-1-RR against Human SRp20 were performed. The affinity constant is 4.07 nM.