

For Research Use Only

SRp20 Recombinant monoclonal antibody

Catalog Number: 87438-1-RR



Basic Information

Catalog Number: 87438-1-RR	GenBank Accession Number: BC000914	Purification Method: Protein A purification
Size: 100ul , Concentration: 1000 µg/ml by Nanodrop;	GeneID (NCBI): 6428	CloneNo.: 252792A4
Source: Rabbit	UNIPROT ID: P84103	Recommended Dilutions: WB: 1:5000-1:50000
Isotype: IgG	Full Name: splicing factor, arginine/serine-rich 3	
Immunogen Catalog Number: AG1341	Calculated MW: 20 kDa	
	Observed MW: 20-24 kDa	

Applications

Tested Applications:
WB, ELISA

Species Specificity:
human, mouse, rat

Positive Controls:

WB : HeLa cells, HepG2 cells, Jurkat cells, K-562 cells, RAW 264.7 cells, NIH/3T3 cells, PC-12 cells

Background Information

SFRS3, also named as SRSF3 and SRP20, belongs to the splicing factor SR family. It may be involved in RNA processing in relation with cellular proliferation and/or maturation. SFRS3 is one of the cognate factors. It is a proto-oncogene critical for cell proliferation and tumor induction and maintenance.

Storage

Storage:
Store at -20°C. Stable for one year after shipment.

Storage Buffer:
PBS with 0.02% sodium azide and 50% glycerol, pH7.3

Aliquoting is unnecessary for -20°C storage

*** 20ul sizes contain 0.1% BSA

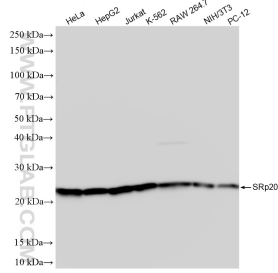
For technical support and original validation data for this product please contact:

T: 1 (888) 4PTGLAB (1-888-478-4522) (toll free in USA), or 1(312) 455-8498 (outside USA)

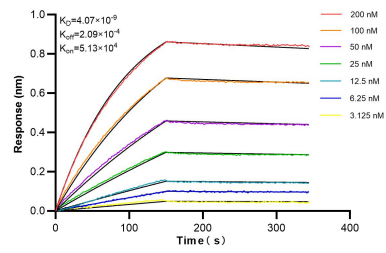
E: proteintech@ptglab.com
W: ptglab.com

This product is exclusively available under Proteintech Group brand and is not available to purchase from any other manufacturer.

Selected Validation Data



Various lysates were subjected to SDS PAGE followed by western blot with 87438-1-RR (SRp20 antibody) at dilution of 1:10000 incubated at room temperature for 1.5 hours.



Biolayer interferometry (BLI) kinetic assays of 87438-1-RR against Human SRp20 were performed. The affinity constant is 4.07 nM.