

For Research Use Only

SRp20 Recombinant monoclonal antibody, PBS Only (Capture)

Catalog Number: 87438-3-PBS



Basic Information

Catalog Number: 87438-3-PBS	GenBank Accession Number: BC000914	Purification Method: Protein A purification
Size: 100ug , Concentration: 1 mg/ml by Nanodrop;	GeneID (NCBI): 6428	CloneNo.: 252792A1
Source: Rabbit	UNIPROT ID: P84103	
Isotype: IgG	Full Name: splicing factor, arginine/serine-rich 3	
Immunogen Catalog Number: AG1341	Calculated MW: 20 kDa	

Applications

Tested Applications:
Cytometric bead array, Sandwich ELISA, Indirect ELISA

Species Specificity:
human

Product Information

87438-3-PBS targets SRp20 as part of a matched antibody pair:

MP03029-1: 87438-3-PBS capture and 87438-2-PBS detection (validated in Cytometric bead array)

MP03029-2: 87438-3-PBS capture and 87438-4-PBS detection (validated in Sandwich ELISA)

Unconjugated rabbit recombinant monoclonal antibody in PBS only (BSA and azide free) storage buffer at a concentration of 1 mg/mL, ready for conjugation. Created using Proteintech's proprietary in-house recombinant technology. Recombinant production enables unrivalled batch-to-batch consistency, easy scale-up, and future security of supply.

This conjugation ready format makes antibodies ideal for use in many applications including: ELISAs, multiplex assays requiring matched pairs, mass cytometry, and multiplex imaging applications. Antibody use should be optimized by the end user for each application and assay.

Storage

Storage:
Store at -80°C.
Storage Buffer:
PBS only, pH7.3

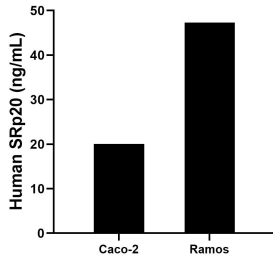
For technical support and original validation data for this product please contact:

T: 1 (888) 4PTGLAB (1-888-478-4522) (toll free in USA), or 1(312) 455-8498 (outside USA)

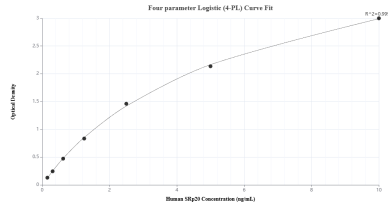
E: proteintech@ptglab.com
W: ptglab.com

This product is exclusively available under Proteintech Group brand and is not available to purchase from any other manufacturer.

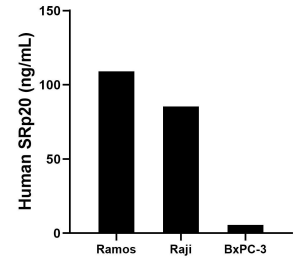
Selected Validation Data



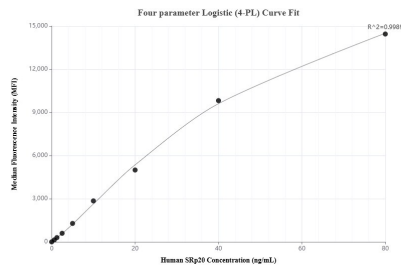
The mean SRp20 concentration was determined to be 20.09 ng/mL in Caco-2 cell extract based on a 1.2 mg/mL extract load and 47.32 ng/mL in Ramos cell extract based on a 1.2 mg/mL extract load.



Sandwich ELISA standard curve of MP03029-2, Human SRp20 Recombinant Matched Antibody Pair - PBS only. 87438-3-PBS was coated to a plate as the capture antibody and incubated with serial dilutions of standard Ag1341. 87438-4-PBS was HRP conjugated as the detection antibody. Range: 0.156-10 ng/mL



The mean SRp20 concentration was determined to be 109.1 ng/mL in Ramos cell extract based on a 1.2 mg/mL extract load, 85.5 ng/mL in Raji cell extract based on a 1.2 mg/mL extract load, 5.6 ng/mL in BxPC-3 cell extract based on a 1.2 mg/mL extract load.



Cytometric bead array standard curve of MP03029-1, SRp20 Recombinant Matched Antibody Pair, PBS Only. Capture antibody: 87438-3-PBS. Detection antibody: 87438-2-PBS. Standard: Ag1341. Range: 0.625-80 ng/mL