

For Research Use Only

CCL18 Recombinant monoclonal antibody, PBS Only (Detector)

Catalog Number: 87440-3-PBS



Basic Information

Catalog Number: 87440-3-PBS	GenBank Accession Number: BC069700	Purification Method: Protein A purification
Size: 100ug , Concentration: 1 mg/ml by Nanodrop;	GeneID (NCBI): 6362	CloneNo.: 251591E11
Source: Rabbit	UNIPROT ID: P55774	
Isotype: IgG	Full Name: chemokine (C-C motif) ligand 18 (pulmonary and activation-regulated)	
Immunogen Catalog Number: EG5093	Calculated MW: 89 aa, 10 kDa	

Applications

Tested Applications:
Sandwich ELISA, Indirect ELISA

Species Specificity:
human

Product Information

87440-3-PBS targets CCL18 as part of a matched antibody pair.

MP03008-2: 87440-4-PBS capture and 87440-3-PBS detection (validated in Sandwich ELISA)

Unconjugated rabbit recombinant monoclonal antibody in PBS only (BSA and azide free) storage buffer at a concentration of 1 mg/mL, ready for conjugation. Created using Proteintech's proprietary in-house recombinant technology. Recombinant production enables unrivalled batch-to-batch consistency, easy scale-up, and future security of supply.

This conjugation ready format makes antibodies ideal for use in many applications including: ELISAs, multiplex assays requiring matched pairs, mass cytometry, and multiplex imaging applications. Antibody use should be optimized by the end user for each application and assay.

Storage

Storage:
Store at -80°C.

Storage Buffer:
PBS only, pH7.3

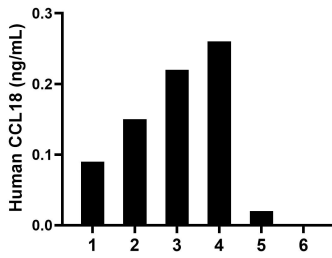
For technical support and original validation data for this product please contact:

T: 1 (888) 4PTGLAB (1-888-478-4522) (toll free in USA), or 1(312) 455-8498 (outside USA)

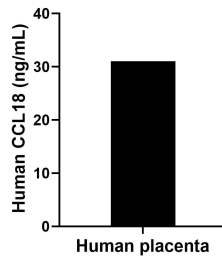
E: proteintech@ptglab.com
W: ptglab.com

This product is exclusively available under Proteintech Group brand and is not available to purchase from any other manufacturer.

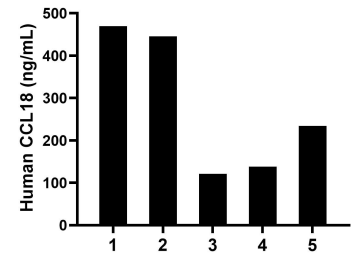
Selected Validation Data



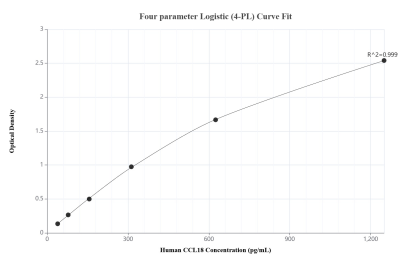
Urine of six individual healthy human donors was measured. The CCL18 concentration of detected samples was determined to be 0.2 ng/mL with a range of ND-0.3 ng/mL.



The mean CCL18 concentration was determined to be 31.0 ng/mL in human placenta extract based on a 3.8 mg/mL extract load.



Plasma of five individual healthy human donors was measured. The CCL18 concentration of detected samples was determined to be 281.8 ng/mL with a range of 121.1-469.5 ng/mL.



Sandwich ELISA standard curve of MP03008-2, Human CCL18 Recombinant Matched Antibody Pair - PBS only. 87440-4-PBS was coated to a plate as the capture antibody and incubated with serial dilutions of standard Eg5093. 87440-3-PBS was HRP conjugated as the detection antibody. Range: 39.1-1250 pg/mL.