

For Research Use Only

ALLC Recombinant monoclonal antibody, PBS Only

Catalog Number: 87443-1-PBS



Basic Information

Catalog Number: 87443-1-PBS	GenBank Accession Number: BC029652	Purification Method: Protein A purification
Size: 100ug , Concentration: 1 mg/ml by Nanodrop;	GeneID (NCBI): 55821	CloneNo.: 252890G5
Source: Rabbit	UNIPROT ID: Q8N6M5	
Isotype: IgG	Full Name: allantoicase	
Immunogen Catalog Number: AG35082	Calculated MW: 409 aa, 46 kDa	
	Observed MW: 43-48 kDa	

Applications

Tested Applications:
WB, Indirect ELISA

Species Specificity:
human, mouse, rat

Background Information

Allantoicase is an enzyme that in humans is encoded by the ALLC gene. Allantoicase catalyzes the chemical reaction allantoate + H₂O (S)-ureidoglycolate + urea.

Storage

Storage:
Store at -80°C.

Storage Buffer:
PBS only, pH7.3

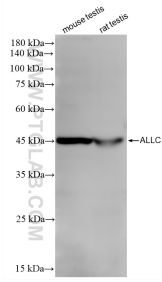
For technical support and original validation data for this product please contact:

T: 1 (888) 4PTGLAB (1-888-478-4522) (toll free in USA), or 1(312) 455-8498 (outside USA)

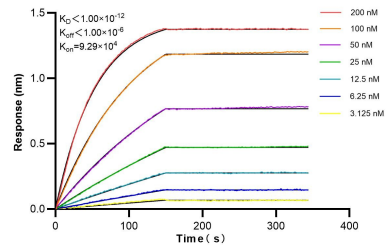
E: proteintech@ptglab.com
W: ptglab.com

This product is exclusively available under Proteintech Group brand and is not available to purchase from any other manufacturer.

Selected Validation Data



Various lysates were subjected to SDS PAGE followed by western blot with 87443-1-RR (ALLC antibody) at dilution of 1:1000 incubated at room temperature for 1.5 hours. This data was developed using the same antibody clone with 87443-1-PBS in a different storage buffer formulation.



Biolayer interferometry (BLI) kinetic assays of 87443-1-RR against Human ALLC were performed. The affinity constant is below 1 pM.