

For Research Use Only

# ALLC Recombinant monoclonal antibody

Catalog Number: 87443-1-RR



## Basic Information

<b>Catalog Number:</b> 87443-1-RR	<b>GenBank Accession Number:</b> BC029652	<b>Purification Method:</b> Protein A purification
<b>Size:</b> 100ul , Concentration: 1000 µg/ml by Nanodrop;	<b>GeneID (NCBI):</b> 55821	<b>CloneNo.:</b> 252890G5
<b>Source:</b> Rabbit	<b>UNIPROT ID:</b> Q8N6M5	<b>Recommended Dilutions:</b> WB: 1:500-1:2000
<b>Isotype:</b> IgG	<b>Full Name:</b> allantoicase	
<b>Immunogen Catalog Number:</b> AG35082	<b>Calculated MW:</b> 409 aa, 46 kDa	
	<b>Observed MW:</b> 43-48 kDa	

## Applications

<b>Tested Applications:</b> WB, ELISA	<b>Positive Controls:</b> WB : mouse testis tissue, rat testis tissue
<b>Species Specificity:</b> human, mouse, rat	

## Background Information

Allantoicase is an enzyme that in humans is encoded by the ALLC gene. Allantoicase catalyzes the chemical reaction allantoate + H<sub>2</sub>O (S)-ureidoglycolate + urea.

## Storage

**Storage:**  
Store at -20°C. Stable for one year after shipment.  
**Storage Buffer:**  
PBS with 0.02% sodium azide and 50% glycerol, pH7.3  
Aliquoting is unnecessary for -20°C storage

\*\*\* 20ul sizes contain 0.1% BSA

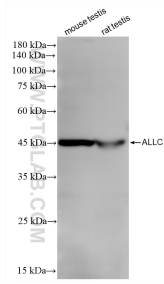
For technical support and original validation data for this product please contact:

T: 1 (888) 4PTGLAB (1-888-478-4522) (toll free in USA), or 1(312) 455-8498 (outside USA)

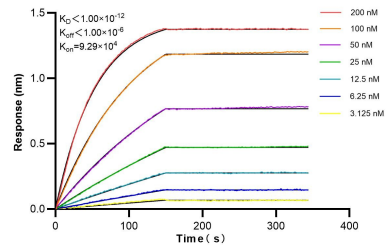
E: [proteintech@ptglab.com](mailto:proteintech@ptglab.com)  
W: [ptglab.com](http://ptglab.com)

This product is exclusively available under Proteintech Group brand and is not available to purchase from any other manufacturer.

## Selected Validation Data



Various lysates were subjected to SDS PAGE followed by western blot with 87443-1-RR (ALLC antibody) at dilution of 1:1000 incubated at room temperature for 1.5 hours.



Biolayer interferometry (BLI) kinetic assays of 87443-1-RR against Human ALLC were performed. The affinity constant is below 1 pM.