

For Research Use Only

LYPD8 Recombinant monoclonal antibody

Catalog Number: 87446-1-RR



Basic Information

Catalog Number: 87446-1-RR	GenBank Accession Number: NM_001083884.1	Purification Method: Protein A purification
Size: 100ul , Concentration: 1000 µg/ml by Nanodrop;	GeneID (NCBI): 70163	CloneNo.: 252926G3
Source: Rabbit	UNIPROT ID: Q9D750	Recommended Dilutions: WB: 1:5000-1:50000
Isotype: IgG	Full Name: RIKEN cDNA 2210415F13 gene	
Immunogen Catalog Number: EG7518	Calculated MW: 28 kDa	
	Observed MW: 75 kDa, 45 kDa	

Applications

Tested Applications: WB, ELISA	Positive Controls: WB : mouse colon tissue,
Species Specificity: mouse	

Background Information

Ly6/PLAUR domain-containing protein 8 (LYPD8) is a highly glycosylated glycosylphosphatidylinositol-anchored protein, which is anchored to intestinal epithelial cells in the uppermost epithelial layer, is constitutively shed into the intestinal lumen and preferentially binds to flagellated bacteria from various genera (PMID: 27027293; 29259722). It has been reported that Lypd8 mediates the segregation of intestinal bacteria and epithelial cells in the colon, thereby preserving intestinal homeostasis (PMID: 27027293). The higher observed molecular weight of LYPD8 is 75 kDa, due to glycosylation modification (PMID: 29259722).

Storage

Storage:
Store at -20°C. Stable for one year after shipment.
Storage Buffer:
PBS with 0.02% sodium azide and 50% glycerol, pH7.3
Aliquoting is unnecessary for -20°C storage

*** 20ul sizes contain 0.1% BSA

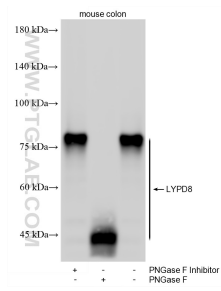
For technical support and original validation data for this product please contact:

T: 1 (888) 4PTGLAB (1-888-478-4522) (toll free in USA), or 1(312) 455-8498 (outside USA)

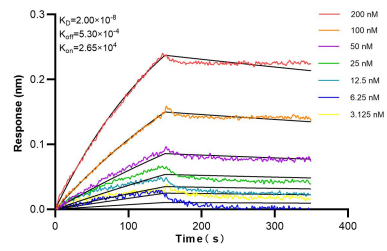
E: proteintech@ptglab.com
W: ptglab.com

This product is exclusively available under Proteintech Group brand and is not available to purchase from any other manufacturer.

Selected Validation Data



Various lysates were subjected to SDS PAGE followed by western blot with 87446-1-RR (LYPD8 antibody) at dilution of 1:10000 incubated at room temperature for 1.5 hours.



Biolayer interferometry (BLI) kinetic assays of 87446-1-RR against Mouse LYPD8 were performed. The affinity constant is 20.0 nM.