

For Research Use Only

# RAB25 Recombinant monoclonal antibody, PBS Only

Catalog Number: 87453-1-PBS



## Basic Information

<b>Catalog Number:</b> 87453-1-PBS	<b>GenBank Accession Number:</b> NML_020387.3	<b>Purification Method:</b> Protein A purification
<b>Size:</b> 100ug, Concentration: 1 mg/ml by Nanodrop;	<b>GeneID (NCBI):</b> 57111	<b>CloneNo.:</b> 252713E9
<b>Source:</b> Rabbit	<b>UNIPROT ID:</b> P57735	
<b>Isotype:</b> IgG	<b>Full Name:</b> RAB25, member RAS oncogene family	
<b>Immunogen Catalog Number:</b> EG5536	<b>Calculated MW:</b> 23 kDa	
	<b>Observed MW:</b> 24 kDa	

## Applications

**Tested Applications:**  
WB, Indirect ELISA

**Species Specificity:**  
human

## Background Information

RAB25 (RAB25, member RAS oncogene family), also known as RAB11C or CATX-8, is a small GTPase belonging to the RAS superfamily of proteins. RAB25 is a key regulator of receptor recycling and polarized vesicular trafficking in epithelial cells. Unlike many RAB proteins, RAB25 expression is predominantly restricted to epithelial tissues and is frequently dysregulated in carcinomas. It functions as a critical determinant of cellular fate through its context-dependent roles in modulating major signaling pathways, including integrin recycling, growth factor receptor trafficking (e.g., EGFR, IGF1R), and autophagy.

## Storage

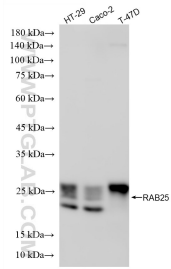
**Storage:**  
Store at -80°C.

**Storage Buffer:**  
PBS only, pH7.3

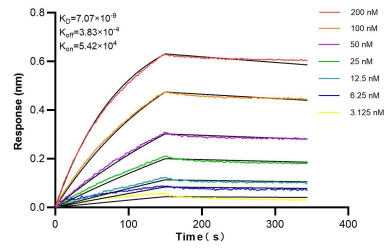
For technical support and original validation data for this product please contact:  
T: 1 (888) 4PTGLAB (1-888-478-4522) (toll free in USA), or 1(312) 455-8498 (outside USA)      E: [proteintech@ptglab.com](mailto:proteintech@ptglab.com)  
W: [ptglab.com](http://ptglab.com)

This product is exclusively available under Proteintech Group brand and is not available to purchase from any other manufacturer.

## Selected Validation Data



HT-29 cells were subjected to SDS PAGE followed by western blot with 87453-1-RR (RAB25 antibody) at dilution of 1:10000 incubated at room temperature for 1.5 hours. This data was developed using the same antibody clone with 87453-1-PBS in a different storage buffer formulation.



Biolayer interferometry (BLI) kinetic assays of 87453-1-RR against Human RAB25 were performed. The affinity constant is 7.07 nM.