

For Research Use Only

# ABCC6 Recombinant monoclonal antibody, PBS Only (Detector)

Catalog Number: 87456-4-PBS



## Basic Information

<b>Catalog Number:</b> 87456-4-PBS	<b>GenBank Accession Number:</b> BC131732	<b>Purification Method:</b> Protein A purification
<b>Size:</b> 100ug, Concentration: 1 mg/ml by Nanodrop;	<b>GeneID (NCBI):</b> 368	<b>CloneNo.:</b> 252956H6
<b>Source:</b> Rabbit	<b>UNIPROT ID:</b> O95255	
<b>Isotype:</b> IgG	<b>Full Name:</b> ATP-binding cassette, sub-family C (CFTR/MRP), member 6	
	<b>Calculated MW:</b> 1503 aa, 165 kDa	

## Applications

**Tested Applications:**  
Sandwich ELISA, Indirect ELISA

**Species Specificity:**  
human

## Product Information

87456-4-PBS targets ABCC6 as part of a matched antibody pair:

MP03056-2: 87456-5-PBS capture and 87456-4-PBS detection (validated in Sandwich ELISA)

Unconjugated rabbit recombinant monoclonal antibody in PBS only (BSA and azide free) storage buffer at a concentration of 1 mg/mL, ready for conjugation. Created using Proteintech's proprietary in-house recombinant technology. Recombinant production enables unrivalled batch-to-batch consistency, easy scale-up, and future security of supply.

This conjugation ready format makes antibodies ideal for use in many applications including: ELISAs, multiplex assays requiring matched pairs, mass cytometry, and multiplex imaging applications. Antibody use should be optimized by the end user for each application and assay.

## Storage

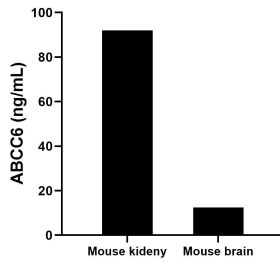
**Storage:**  
Store at -80°C.

**Storage Buffer:**  
PBS only, pH7.3

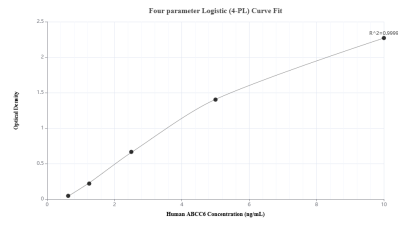
For technical support and original validation data for this product please contact:  
T: 1 (888) 4PTGLAB (1-888-478-4522) (toll free in USA), or 1(312) 455-8498 (outside USA)      E: [proteintech@ptglab.com](mailto:proteintech@ptglab.com)  
W: [ptglab.com](http://ptglab.com)

**This product is exclusively available under Proteintech Group brand and is not available to purchase from any other manufacturer.**

## Selected Validation Data



The mean ABCC6 concentration was determined to be 92.00 ng/mL in mouse kidney tissue extract based on a 8.4 mg/mL extract load and 12.50 ng/mL in mouse brain tissue extract based on a 6.4 mg/mL extract load.



Sandwich ELISA standard curve of MP03056-2, Human ABCC6 Recombinant Matched Antibody Pair - PBS only. 87456-5-PBS was coated to a plate as the capture antibody and incubated with serial dilutions of standard SY03023. 87456-4-PBS was HRP conjugated as the detection antibody. Range: 0.625-10 ng/mL