

For Research Use Only

ABCC6 Recombinant monoclonal antibody, PBS Only (Capture)

Catalog Number: 87456-5-PBS



Basic Information

Catalog Number: 87456-5-PBS	GenBank Accession Number: BC131732	Purification Method: Protein A purification
Size: 100ug, Concentration: 1 mg/ml by Nanodrop;	GeneID (NCBI): 368	CloneNo.: 252956G12
Source: Rabbit	UNIPROT ID: O95255	
Isotype: IgG	Full Name: ATP-binding cassette, sub-family C (CFTR/MRP), member 6	
	Calculated MW: 1503 aa, 165 kDa	

Applications

Tested Applications:
Sandwich ELISA, Indirect ELISA

Species Specificity:
human

Product Information

87456-5-PBS targets ABCC6 as part of a matched antibody pair:

MP03056-2: 87456-5-PBS capture and 87456-4-PBS detection (validated in Sandwich ELISA)

Unconjugated rabbit recombinant monoclonal antibody in PBS only (BSA and azide free) storage buffer at a concentration of 1 mg/mL, ready for conjugation. Created using Proteintech's proprietary in-house recombinant technology. Recombinant production enables unrivalled batch-to-batch consistency, easy scale-up, and future security of supply.

This conjugation ready format makes antibodies ideal for use in many applications including: ELISAs, multiplex assays requiring matched pairs, mass cytometry, and multiplex imaging applications. Antibody use should be optimized by the end user for each application and assay.

Storage

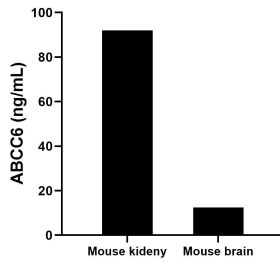
Storage:
Store at -80°C.

Storage Buffer:
PBS only, pH7.3

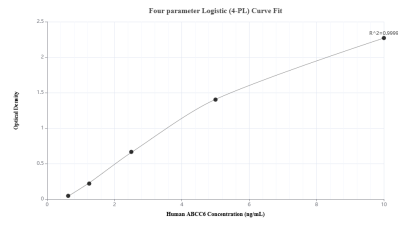
For technical support and original validation data for this product please contact:
T: 1 (888) 4PTGLAB (1-888-478-4522) (toll free in USA), or 1(312) 455-8498 (outside USA) E: proteintech@ptglab.com
W: ptglab.com

This product is exclusively available under Proteintech Group brand and is not available to purchase from any other manufacturer.

Selected Validation Data



The mean ABCC6 concentration was determined to be 92.00 ng/mL in mouse kidney tissue extract based on a 8.4 mg/mL extract load and 12.50 ng/mL in mouse brain tissue extract based on a 6.4 mg/mL extract load.



Sandwich ELISA standard curve of MP03056-2, Human ABCC6 Recombinant Matched Antibody Pair - PBS only. 87456-5-PBS was coated to a plate as the capture antibody and incubated with serial dilutions of standard SY03023. 87456-4-PBS was HRP conjugated as the detection antibody. Range: 0.625-10 ng/mL