

For Research Use Only

Mertk Recombinant monoclonal antibody

Catalog Number: 87457-2-RR



Basic Information

Catalog Number: 87457-2-RR	GenBank Accession Number: NM_008587.2	Purification Method: Protein A purification
Size: 100ul , Concentration: 1000 µg/ml by Nanodrop;	GeneID (NCBI): 17289	CloneNo.: 250615D7
Source: Rabbit	UNIPROT ID: Q60805	Recommended Dilutions: WB: 1:1000-1:6000
Isotype: IgG	Full Name: c-mer proto-oncogene tyrosine kinase	
Immunogen Catalog Number: EG2866	Calculated MW: 110 kDa	
	Observed MW: 110 kDa	

Applications

Tested Applications: WB, ELISA	Positive Controls: WB : rat kidney tissue,
Species Specificity: mouse, rat	

Background Information

Mertk is predominantly expressed in macrophages, dendritic cells, microglia, and retinal pigment epithelial cells, where it functions as a key regulator of efferocytosis, immune tolerance, and tissue homeostasis. Genetic ablation of Mertk leads to defective apoptotic cell clearance, chronic inflammation, and retinal degeneration, establishing Mertk as a central TAM receptor in innate immune regulation and tissue maintenance.

Storage

Storage:
Store at -20°C. Stable for one year after shipment.
Storage Buffer:
PBS with 0.02% sodium azide and 50% glycerol, pH7.3
Aliquoting is unnecessary for -20°C storage

*** 20ul sizes contain 0.1% BSA

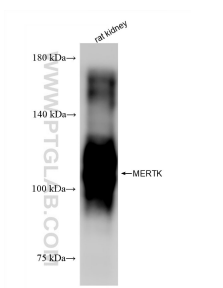
For technical support and original validation data for this product please contact:

T: 1 (888) 4PTGLAB (1-888-478-4522) (toll free in USA), or 1(312) 455-8498 (outside USA)

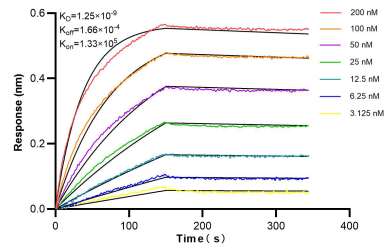
E: proteintech@ptglab.com
W: ptglab.com

This product is exclusively available under Proteintech Group brand and is not available to purchase from any other manufacturer.

Selected Validation Data



rat kidney tissue were subjected to SDS PAGE followed by western blot with 87457-2-RR (Mertk antibody) at dilution of 1:3000 incubated at room temperature for 1.5 hours.



Biolayer interferometry (BLI) kinetic assays of 87457-2-RR against Mouse Mertk were performed. The affinity constant is 1.25 nM.