

For Research Use Only

Mouse Mertk Recombinant monoclonal antibody, PBS Only (Detector)

Catalog Number: 87457-3-PBS



Basic Information

Catalog Number: 87457-3-PBS	GenBank Accession Number: NM_008587.2	Purification Method: Protein A purification
Size: 100ug , Concentration: 1 mg/ml by Nanodrop;	GeneID (NCBI): 17289	CloneNo.: 250615D11
Source: Rabbit	UNIPROT ID: Q60805	
Isotype: IgG	Full Name: c-mer proto-oncogene tyrosine kinase	
Immunogen Catalog Number: EG2866	Calculated MW: 110 kDa	

Applications

Tested Applications:
Cytometric bead array, Sandwich ELISA, Indirect ELISA

Species Specificity:
mouse

Product Information

87457-3-PBS targets Mertk as part of a matched antibody pair:

MP03042-1: 87457-2-PBS capture and 87457-3-PBS detection (validated in Cytometric bead array)

MP03042-2: 87457-4-PBS capture and 87457-3-PBS detection (validated in Sandwich ELISA)

Unconjugated rabbit recombinant monoclonal antibody in PBS only (BSA and azide free) storage buffer at a concentration of 1 mg/mL, ready for conjugation. Created using Proteintech's proprietary in-house recombinant technology. Recombinant production enables unrivalled batch-to-batch consistency, easy scale-up, and future security of supply.

This conjugation ready format makes antibodies ideal for use in many applications including: ELISAs, multiplex assays requiring matched pairs, mass cytometry, and multiplex imaging applications. Antibody use should be optimized by the end user for each application and assay.

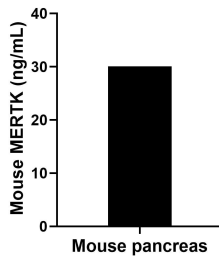
Storage

Storage:
Store at -80°C.
Storage Buffer:
PBS only, pH7.3

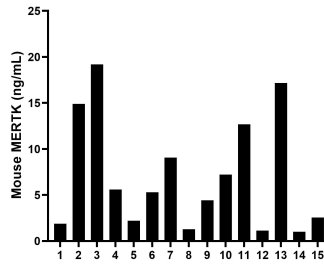
For technical support and original validation data for this product please contact:
T: 1 (888) 4PTGLAB (1-888-478-4522) (toll free in USA), or 1(312) 455-8498 (outside USA) E: proteintech@ptglab.com
W: ptglab.com

This product is exclusively available under Proteintech Group brand and is not available to purchase from any other manufacturer.

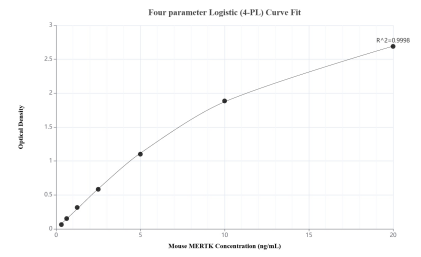
Selected Validation Data



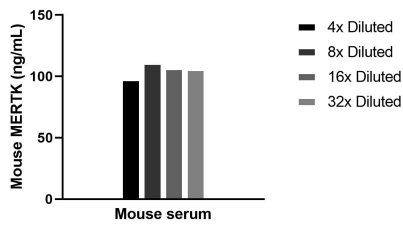
The mean MERTK concentration was determined to be 30.09 ng/mL in mouse pancreas extract based on a 10.60 mg/mL extract load.



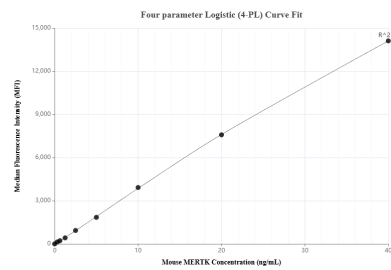
Serum of fifteen mice was measured. The MERTK concentration of detected samples was determined to be 7.04 ng/mL with a range of 1.00-19.20 ng/mL.



Sandwich ELISA standard curve of MP03042-2, Mouse MERTK Recombinant Matched Antibody Pair - PBS only. 87457-4-PBS was coated to a plate as the capture antibody and incubated with serial dilutions of standard Eg2866. 87457-3-PBS was HRP conjugated as the detection antibody. Range: 0.313-20 ng/mL.



The mean MERTK concentration was determined to be 105.3 ng/mL in mouse serum.



Cytometric bead array standard curve of MP03042-1, MOUSE MERTK Recombinant Matched Antibody Pair, PBS Only. Capture antibody: 87457-2-PBS. Detection antibody: 87457-3-PBS. Standard: Eg2866. Range: 0.312-40 ng/mL.