

For Research Use Only

# ITA4 Recombinant monoclonal antibody, PBS Only (Detector)

Catalog Number: 87459-5-PBS



## Basic Information

<b>Catalog Number:</b> 87459-5-PBS	<b>GenBank Accession Number:</b> 3676	<b>Purification Method:</b> Protein A purification
<b>Size:</b> 100ug, Concentration: 1 mg/ml by Nanodrop;	<b>GeneID (NCBI):</b> 3676	<b>CloneNo.:</b> 252683H2
<b>Source:</b> Rabbit	<b>Full Name:</b> integrin, alpha 4 (antigen CD49D, alpha 4 subunit of VLA-4 receptor)	
<b>Isotype:</b> IgG		
<b>Immunogen Catalog Number:</b> EG10494		

## Applications

**Tested Applications:**  
Cytometric bead array, Sandwich ELISA, Indirect ELISA

**Species Specificity:**  
human

## Product Information

87459-5-PBS targets ITA4 as part of a matched antibody pair:

MP03046-1: 87459-3-PBS capture and 87459-5-PBS detection (validated in Cytometric bead array)

MP03046-2: 87459-6-PBS capture and 87459-5-PBS detection (validated in Sandwich ELISA)

Unconjugated rabbit recombinant monoclonal antibody in PBS only (BSA and azide free) storage buffer at a concentration of 1 mg/mL, ready for conjugation. Created using Proteintech's proprietary in-house recombinant technology. Recombinant production enables unrivalled batch-to-batch consistency, easy scale-up, and future security of supply.

This conjugation ready format makes antibodies ideal for use in many applications including: ELISAs, multiplex assays requiring matched pairs, mass cytometry, and multiplex imaging applications. Antibody use should be optimized by the end user for each application and assay.

## Storage

**Storage:**  
Store at -80°C.  
**Storage Buffer:**  
PBS only, pH7.3

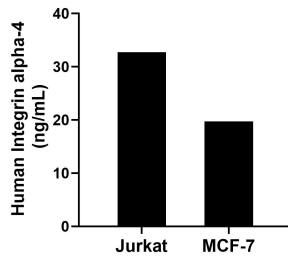
For technical support and original validation data for this product please contact:

T: 1 (888) 4PTGLAB (1-888-478-4522) (toll free in USA), or 1(312) 455-8498 (outside USA)

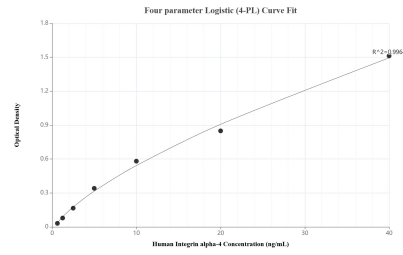
E: [proteintech@ptglab.com](mailto:proteintech@ptglab.com)  
W: [ptglab.com](http://ptglab.com)

**This product is exclusively available under Proteintech Group brand and is not available to purchase from any other manufacturer.**

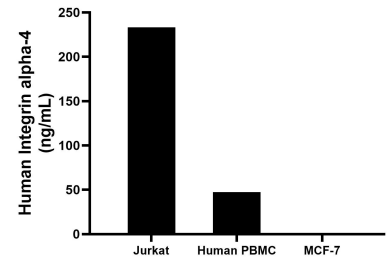
## Selected Validation Data



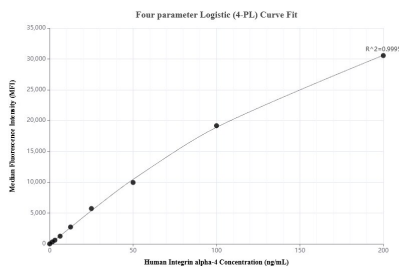
The mean Integrin alpha-4 concentration was determined to be 32.70 ng/mL in Jurkat cell extract based on a 1.20 mg/mL extract load and 19.70 ng/mL in MCF-7 cell extract based on a 1.20 mg/mL extract load.



Sandwich ELISA standard curve of MP03046-2, Human Integrin alpha-4 Recombinant Matched Antibody Pair - PBS only. 87459-6-PBS was coated to a plate as the capture antibody and incubated with serial dilutions of standard Eg10494. 87459-5-PBS was HRP conjugated as the detection antibody. Range: 0.625-40 ng/mL.



The mean Integrin alpha-4 concentration was determined to be 233.1 ng/mL in Jurkat cell extract based on a 1.2 mg/mL extract load, 47.4 ng/mL in Human PBMC cell extract based on a 0.6 mg/mL extract load, MCF-7 cell extract were served as a negative control.



Cytometric bead array standard curve of MP03046-1, Integrin alpha-4 Recombinant Matched Antibody Pair, PBS Only. Capture antibody: 87459-3-PBS. Detection antibody: 87459-5-PBS. Standard: Eg10494. Range: 1.562-200 ng/mL.