

For Research Use Only

Mouse Integrin beta 5 Recombinant monoclonal antibody, PBS Only (Detector)

Catalog Number: 87465-1-PBS



Basic Information

Catalog Number: 87465-1-PBS	GenBank Accession Number: GeneID (NCBI): 16419	Purification Method: Protein A purification
Size: 100ug, Concentration: 1 mg/ml by Nanodrop;	Full Name: integrin beta 5	CloneNo.: 252748B7
Source: Rabbit	Observed MW: 100 kDa	
Isotype: IgG		
Immunogen Catalog Number: EG10456		

Applications

Tested Applications:
WB, IHC, IF/ICC, Sandwich ELISA, Indirect ELISA

Species Specificity:
mouse, rat

Product Information

87465-1-PBS targets Integrin beta 5 as part of a matched antibody pair:

MP03166-1: 87465-2-PBS capture and 87465-1-PBS detection (validated in Sandwich ELISA)

Unconjugated rabbit recombinant monoclonal antibody in PBS only (BSA and azide free) storage buffer at a concentration of 1 mg/mL, ready for conjugation. Created using Proteintech's proprietary in-house recombinant technology. Recombinant production enables unrivalled batch-to-batch consistency, easy scale-up, and future security of supply.

This conjugation ready format makes antibodies ideal for use in many applications including: ELISAs, multiplex assays requiring matched pairs, mass cytometry, and multiplex imaging applications. Antibody use should be optimized by the end user for each application and assay.

Background Information

Integrin beta-5 (ITGB5) is expected to be located in the plasma membrane and mitochondria, which is ubiquitinated in placenta and gall bladder. ITGB5 is a member of integrins and was proved to be associated with pathological processes in several tumors (PMID: 34966851). It is reported that TGB5 is highly expressed in hepatocellular carcinoma (HCC), and miR-185 regulates the expression of β -catenin through the ITGB5-dependent manner and affects the proliferation and migration of HCC cells (PMID: 35223869).

Storage

Storage:
Store at -80°C.

Storage Buffer:
PBS only, pH7.3

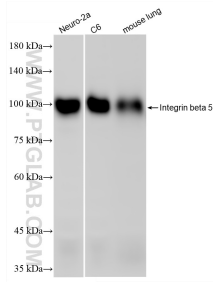
For technical support and original validation data for this product please contact:

T: 1 (888) 4PTGLAB (1-888-478-4522) (toll free in USA), or 1(312) 455-8498 (outside USA)

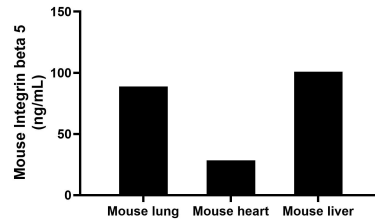
E: proteintech@ptglab.com
W: ptglab.com

This product is exclusively available under Proteintech Group brand and is not available to purchase from any other manufacturer.

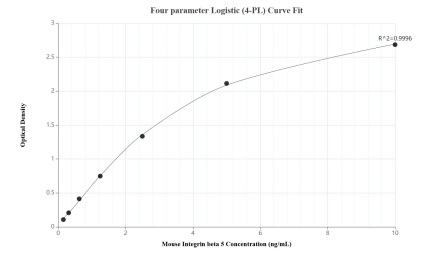
Selected Validation Data



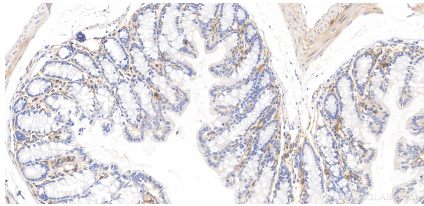
Various lysates were subjected to SDS PAGE followed by western blot with 87465-1-RR (ITB5 antibody) at dilution of 1:5000 incubated at room temperature for 1.5 hours. This data was developed using the same antibody clone with 87465-1-PBS in a different storage buffer formulation.



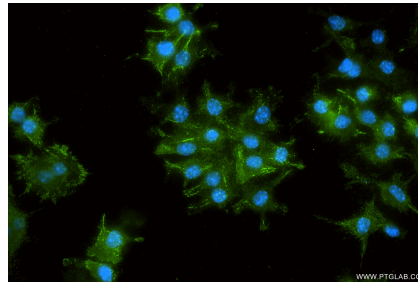
The mean Integrin beta 5 concentration was determined to be 88.87 ng/mL in mouse lung extract based on a 5.00 mg/mL extract load, 28.42 ng/mL in mouse heart extract based on a 5.40 mg/mL extract load and 100.97 ng/mL in mouse liver extract based on a 8.40 mg/mL extract load.



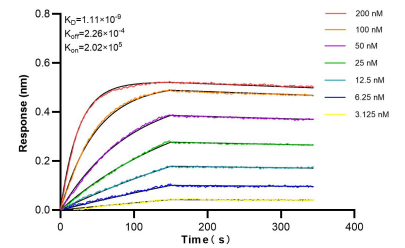
Sandwich ELISA standard curve of MP03166-1, Mouse Integrin beta 5 Recombinant Matched Antibody Pair - PBS only. 87465-2-PBS was coated to a plate as the capture antibody and incubated with serial dilutions of standard Eg10456. 87465-1-PBS was HRP conjugated as the detection antibody. Range: 0.156-10 ng/mL



Immunohistochemical analysis of paraffin-embedded mouse colon tissue slide using 87465-1-RR (Integrin beta 5 antibody) at dilution of 1:1000 (under 20x lens). Heat mediated antigen retrieval with Tris-EDTA buffer (pH 9.0). This data was developed using the same antibody clone with 87465-1-PBS in a different storage buffer formulation.



Immunofluorescent analysis of (4% PFA) fixed RAW 264.7 cells using Integrin beta 5 antibody (87465-1-RR, Clone: 252748B7) at dilution of 1:400 and CoraLite®488-Conjugated Goat Anti-Rabbit IgG(H+L) (SA00013-2). This data was developed using the same antibody clone with 87465-1-PBS in a different storage buffer formulation.



Bi-layer interferometry (BLI) kinetic assays of 87465-1-RR against Mouse Integrin beta 5 were performed. The affinity constant is 1.11 nM.