

For Research Use Only

Integrin beta 5 Recombinant monoclonal antibody

Catalog Number: 87465-1-RR



Basic Information

Catalog Number: 87465-1-RR	GenBank Accession Number: GeneID (NCBI): 16419	Purification Method: Protein A purification
Size: 100ul, Concentration: 1000 µg/ml by Nanodrop;	Full Name: integrin beta 5	CloneNo.: 252748B7
Source: Rabbit	Observed MW: 100 kDa	Recommended Dilutions: WB: 1:2000-1:10000 IHC: 1:500-1:2000 IF/ICC: 1:200-1:800
Isotype: IgG		
Immunogen Catalog Number: EG10456		

Applications

Tested Applications: WB, IF/ICC, ELISA	Positive Controls: WB : Neuro-2a cells, C6 cells, mouse lung tissue
Species Specificity: mouse, rat	IHC : mouse colon tissue, IF/ICC : RAW 264.7 cells,
Note-IHC: suggested antigen retrieval with TE buffer pH 9.0; (*) Alternatively, antigen retrieval may be performed with citrate buffer pH 6.0	

Background Information

Integrin beta-5 (ITGB5) is expected to be located in the plasma membrane and mitochondria, which is ubiquitinated in placenta and gall bladder. ITGB5 is a member of integrins and was proved to be associated with pathological processes in several tumors (PMID: 34966851). It is reported that TGB5 is highly expressed in hepatocellular carcinoma (HCC), and miR-185 regulates the expression of β -catenin through the ITGB5-dependent manner and affects the proliferation and migration of HCC cells (PMID: 35223869).

Storage

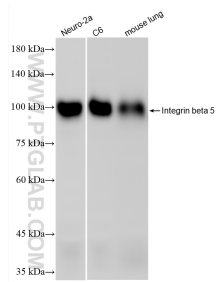
Storage:
Store at -20°C. Stable for one year after shipment.
Storage Buffer:
PBS with 0.02% sodium azide and 50% glycerol, pH7.3
Aliquoting is unnecessary for -20°C storage

*** 20ul sizes contain 0.1% BSA

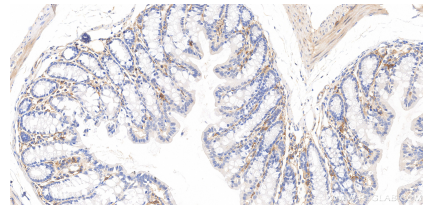
For technical support and original validation data for this product please contact:
T: 1 (888) 4PTGLAB (1-888-478-4522) (toll free in USA), or 1(312) 455-8498 (outside USA)
E: proteintech@ptglab.com
W: ptglab.com

This product is exclusively available under Proteintech Group brand and is not available to purchase from any other manufacturer.

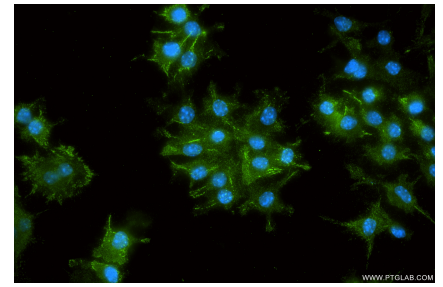
Selected Validation Data



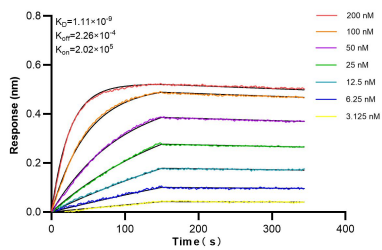
Various lysates were subjected to SDS PAGE followed by western blot with 87465-1-RR (ITB5 antibody) at dilution of 1:5000 incubated at room temperature for 1.5 hours.



Immunohistochemical analysis of paraffin-embedded mouse colon tissue slide using 87465-1-RR (Integrin beta 5 antibody) at dilution of 1:1000 (under 20x lens). Heat mediated antigen retrieval with Tris-EDTA buffer (pH 9.0).



Immunofluorescent analysis of (4% PFA) fixed RAW 264.7 cells using Integrin beta 5 antibody (87465-1-RR, Clone: 252748B7) at dilution of 1:400 and CoraLite® 488-Conjugated Goat Anti-Rabbit IgG(H+L) (SA00013-2).



Biolayer interferometry (BLI) kinetic assays of 87465-1-RR against Mouse Integrin beta 5 were performed. The affinity constant is 1.11 nM.