

For Research Use Only

Mouse ITB5 Recombinant monoclonal antibody, PBS Only (Capture)

Catalog Number: 87465-2-PBS



Basic Information

Catalog Number:

87465-2-PBS

Size:

100ug, Concentration: 1 mg/ml by Nanodrop;

Source:

Rabbit

Isotype:

IgG

Immunogen Catalog Number:

EG10456

GenBank Accession Number:

GeneID (NCBI):

16419

Full Name:

integrin beta 5

Purification Method:

Protein A purification

CloneNo.:

252748C4

Applications

Tested Applications:

Sandwich ELISA, Indirect ELISA

Species Specificity:

mouse

Product Information

87465-2-PBS targets ITB5 as part of a matched antibody pair.

MP03166-1: 87465-2-PBS capture and 87465-1-PBS detection (validated in Sandwich ELISA)

Unconjugated rabbit recombinant monoclonal antibody in PBS only (BSA and azide free) storage buffer at a concentration of 1 mg/mL, ready for conjugation. Created using Proteintech's proprietary in-house recombinant technology. Recombinant production enables unrivalled batch-to-batch consistency, easy scale-up, and future security of supply.

This conjugation ready format makes antibodies ideal for use in many applications including: ELISAs, multiplex assays requiring matched pairs, mass cytometry, and multiplex imaging applications. Antibody use should be optimized by the end user for each application and assay.

Storage

Storage:

Store at -80°C.

Storage Buffer:

PBS only, pH7.3

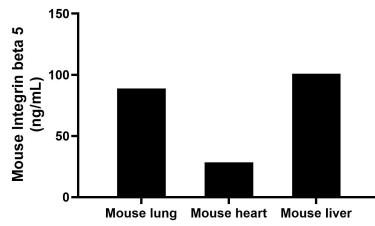
For technical support and original validation data for this product please contact:

T: 1 (888) 4PTGLAB (1-888-478-4522) (toll free in USA), or 1(312) 455-8498 (outside USA)

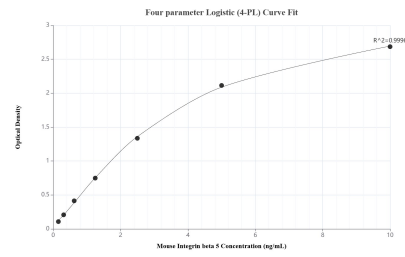
E: proteintech@ptglab.com
W: ptglab.com

This product is exclusively available under Proteintech Group brand and is not available to purchase from any other manufacturer.

Selected Validation Data



The mean Integrin beta 5 concentration was determined to be 88.87 ng/mL in mouse lung extract based on a 5.00 mg/mL extract load, 28.42 ng/mL in mouse heart extract based on a 5.40 mg/mL extract load and 100.97 ng/mL in mouse liver extract based on a 8.40 mg/mL extract load.



Sandwich ELISA standard curve of MP03166-1, Mouse Integrin beta 5 Recombinant Matched Antibody Pair - PBS only. 87465-2-PBS was coated to a plate as the capture antibody and incubated with serial dilutions of standard Eg10456. 87465-1-PBS was HRP conjugated as the detection antibody. Range: 0.156-10 ng/mL.