

For Research Use Only

# ST6GAL1 Recombinant monoclonal antibody

Catalog Number: 87468-1-RR



## Basic Information

|  |   |   |
|--|---|---|
| <b>Catalog Number:</b><br>87468-1-RR                           | <b>GenBank Accession Number:</b><br>NM_001252505.1                  | <b>Purification Method:</b><br>Protein A purification   |
| <b>Size:</b><br>100ul , Concentration: 1000 µg/ml by Nanodrop; | <b>GeneID (NCBI):</b><br>20440                                      | <b>CloneNo.:</b><br>251963F1  |
| <b>Source:</b><br>Rabbit                                       | <b>UNIPROT ID:</b><br>Q64685  | <b>Recommended Dilutions:</b><br>WB: 1:500-1:2000<br>IHC: 1:500-1:2000<br>IF/ICC: 1:200-1:800 |
| <b>Isotype:</b><br>IgG   | <b>Full Name:</b><br>beta galactoside alpha 2,6 sialyltransferase 1 |   |
| <b>Immunogen Catalog Number:</b><br>EG5251                     | <b>Calculated MW:</b><br>47 kDa                                     |   |
|  | <b>Observed MW:</b><br>39-42 kDa and 49-50 kDa                      |   |

## Applications

|  |   |
|--|---|
| <b>Tested Applications:</b><br>WB, IHC, IF/ICC, ELISA  | <b>Positive Controls:</b><br>WB : 4T1 cells, mouse liver tissue, rat liver tissue<br>IHC : mouse liver tissue, mouse spleen tissue<br>IF/ICC : 4T1 cells, |
| <b>Species Specificity:</b><br>mouse, rat  |   |
| <b>Note-IHC: suggested antigen retrieval with TE buffer pH 9.0; (*) Alternatively, antigen retrieval may be performed with citrate buffer pH 6.0</b> |   |

## Background Information

ST6GAL1 is a sialyltransferase mediating the glycosylation of proteins and lipids to form functionally important glycoproteins and glycolipids in the Golgi compartment. It is principally expressed in liver, placenta, and skeletal muscle (PMID: 15049997, PMID: 23358684). Two molecular forms of ST6GAL1 are generally observed, a larger 49-50 kDa and a smaller 39-42 kDa form, representing its full-length and the smaller soluble catalytic domain, respectively (PMID: 35676533, PMID: 35661210).

## Storage

**Storage:**  
Store at -20°C. Stable for one year after shipment.  
**Storage Buffer:**  
PBS with 0.02% sodium azide and 50% glycerol, pH7.3  
Aliquoting is unnecessary for -20°C storage

\*\*\* 20ul sizes contain 0.1% BSA

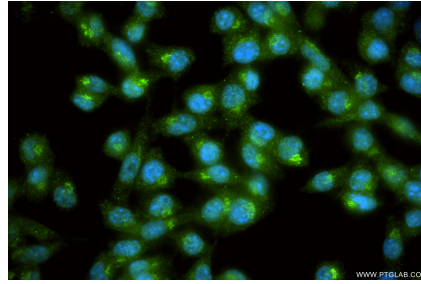
For technical support and original validation data for this product please contact:  
T: 1 (888) 4PTGLAB (1-888-478-4522) (toll free in USA), or 1(312) 455-8498 (outside USA)      E: proteintech@ptglab.com  
W: ptglab.com

This product is exclusively available under Proteintech Group brand and is not available to purchase from any other manufacturer.

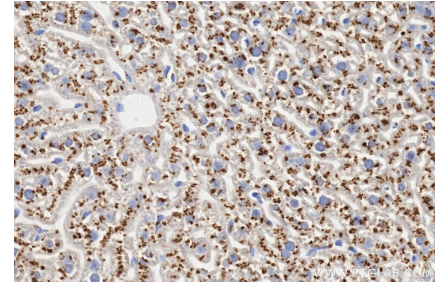
## Selected Validation Data



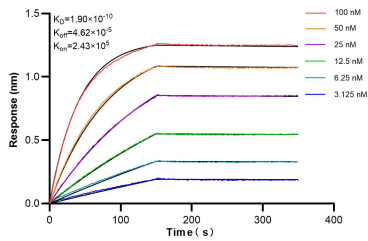
4T1 cells were subjected to SDS PAGE followed by western blot with 87468-1-RR (ST6GAL1 antibody) at dilution of 1:1000 incubated at room temperature for 1.5 hours.



Immunofluorescent analysis of (4% PFA) fixed 4T1 cells using ST6GAL1 antibody (87468-1-RR, Clone: 251963F1 ) at dilution of 1:400 and CoraLite®488-Conjugated Goat Anti-Rabbit IgG(H+L) (SA00013-2).



Immunohistochemical analysis of paraffin-embedded mouse liver tissue slide using 87468-1-RR (ST6GAL1 antibody) at dilution of 1:1000 (under 40x lens). Heat mediated antigen retrieval with Tris-EDTA buffer (pH 9.0).



Biolayer interferometry (BLI) kinetic assays of 87468-1-RR against Mouse ST6GAL1 were performed. The affinity constant is 0.19 nM.