

For Research Use Only

Mouse ST6GAL1 Recombinant monoclonal antibody, PBS Only (Detector)

Catalog Number: 87468-2-PBS



Basic Information

Catalog Number: 87468-2-PBS	GenBank Accession Number: NM_001252505.1	Purification Method: Protein A purification
Size: 100ug , Concentration: 1 mg/ml by Nanodrop;	GeneID (NCBI): 20440	CloneNo.: 251963E5
Source: Rabbit	UNIPROT ID: Q64685	
Isotype: IgG	Full Name: beta galactoside alpha 2,6 sialyltransferase 1	
Immunogen Catalog Number: EG5251	Calculated MW: 47 kDa	

Applications

Tested Applications:
Sandwich ELISA, Indirect ELISA

Species Specificity:
mouse

Product Information

87468-2-PBS targets ST6GAL1 as part of a matched antibody pair:

MP03142-1: 87468-1-PBS capture and 87468-2-PBS detection (validated in Sandwich ELISA)

Unconjugated rabbit recombinant monoclonal antibody in PBS only (BSA and azide free) storage buffer at a concentration of 1 mg/mL, ready for conjugation. Created using Proteintech's proprietary in-house recombinant technology. Recombinant production enables unrivalled batch-to-batch consistency, easy scale-up, and future security of supply.

This conjugation ready format makes antibodies ideal for use in many applications including: ELISAs, multiplex assays requiring matched pairs, mass cytometry, and multiplex imaging applications. Antibody use should be optimized by the end user for each application and assay.

Storage

Storage:
Store at -80°C.

Storage Buffer:
PBS only, pH7.3

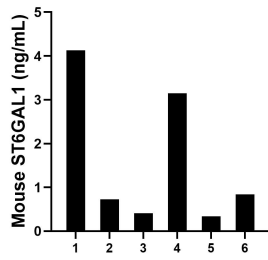
For technical support and original validation data for this product please contact:

T: 1 (888) 4PTGLAB (1-888-478-4522) (toll free in USA), or 1(312) 455-8498 (outside USA)

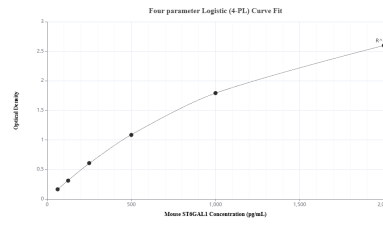
E: proteintech@ptglab.com
W: ptglab.com

This product is exclusively available under Proteintech Group brand and is not available to purchase from any other manufacturer.

Selected Validation Data



Serum of six mice was measured. The mouse ST6GAL1 concentration of detected samples was determined to be 1.60 ng/mL with a range of 0.34 - 4.13 ng/mL.



Sandwich ELISA standard curve of MP03142-1, Mouse ST6GAL1 Recombinant Matched Antibody Pair - PBS only. 87468-1-PBS was coated to a plate as the capture antibody and incubated with serial dilutions of standard Eg5251. 87468-2-PBS was HRP conjugated as the detection antibody. Range: 62.5-2000 pg/mL