

For Research Use Only

Mouse Prss2 Recombinant monoclonal antibody, PBS Only (Capture)

Catalog Number: 87469-3-PBS



Basic Information

Catalog Number: 87469-3-PBS	GenBank Accession Number: NM_009430.2	Purification Method: Protein A purification
Size: 100ug, Concentration: 1 mg/ml by Nanodrop;	GeneID (NCBI): 22072	CloneNo.: 250391A6
Source: Rabbit	UNIPROT ID: P07146	
Isotype: IgG	Full Name: protease, serine, 2	
Immunogen Catalog Number: EG3056	Calculated MW: 26 kDa	

Applications

Tested Applications:
Cytometric bead array, Indirect ELISA

Species Specificity:
mouse

Product Information

87469-3-PBS targets Prss2 as part of a matched antibody pair:

MP03038-1: 87469-3-PBS capture and 87469-2-PBS detection (validated in Cytometric bead array)

Unconjugated rabbit recombinant monoclonal antibody in PBS only (BSA and azide free) storage buffer at a concentration of 1 mg/mL, ready for conjugation. Created using Proteintech's proprietary in-house recombinant technology. Recombinant production enables unrivalled batch-to-batch consistency, easy scale-up, and future security of supply.

This conjugation ready format makes antibodies ideal for use in many applications including: ELISAs, multiplex assays requiring matched pairs, mass cytometry, and multiplex imaging applications. Antibody use should be optimized by the end user for each application and assay.

Storage

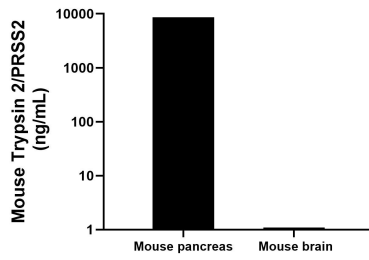
Storage:
Store at -80°C.

Storage Buffer:
PBS only, pH7.3

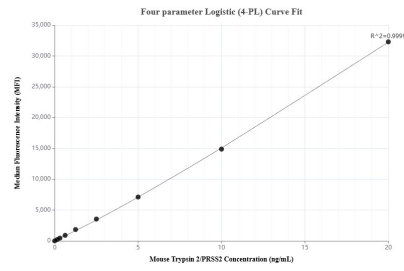
For technical support and original validation data for this product please contact:
T: 1 (888) 4PTGLAB (1-888-478-4522) (toll free in USA), or 1(312) 455-8498 (outside USA) E: proteintech@ptglab.com
W: ptglab.com

This product is exclusively available under Proteintech Group brand and is not available to purchase from any other manufacturer.

Selected Validation Data



The mean Trypsin 2/PRSS2 concentration was determined to be 8581.8 ng/mL in Mouse pancreas tissue extract based on a 10.6 mg/mL extract load, 1.1 ng/mL in Mouse brain tissue extract based on a 3.2 mg/mL extract load.



Cytometric bead array standard curve of MP03038-1, MOUSE Trypsin 2/PRSS2 Recombinant Matched Antibody Pair, PBS Only. Capture antibody: 87469-3-PBS. Detection antibody: 87469-2-PBS. Standard: Eg3056. Range: 0.156-20 ng/mL.