

For Research Use Only

Ephrin A1 Recombinant monoclonal antibody, PBS Only (Capture)

Catalog Number: 87470-4-PBS



Basic Information

Catalog Number: 87470-4-PBS	GenBank Accession Number: NM_004428.3	Purification Method: Protein A purification
Size: 100ug, Concentration: 1 mg/ml by Nanodrop;	GeneID (NCBI): 1942	CloneNo.: 252222B8
Source: Rabbit	UNIPROT ID: P20827-1	
Isotype: IgG	Full Name: ephrin-A1	
Immunogen Catalog Number: EG5498	Calculated MW: 24 kDa	

Applications

Tested Applications:
Cytometric bead array, Sandwich ELISA, Indirect ELISA

Species Specificity:
human

Product Information

87470-4-PBS targets Ephrin A1 as part of a matched antibody pair:

MP03040-1: 87470-4-PBS capture and 87470-3-PBS detection (validated in Cytometric bead array)

MP03040-2: 87470-4-PBS capture and 87470-5-PBS detection (validated in Sandwich ELISA)

Unconjugated rabbit recombinant monoclonal antibody in PBS only (BSA and azide free) storage buffer at a concentration of 1 mg/mL, ready for conjugation. Created using Proteintech's proprietary in-house recombinant technology. Recombinant production enables unrivalled batch-to-batch consistency, easy scale-up, and future security of supply.

This conjugation ready format makes antibodies ideal for use in many applications including: ELISAs, multiplex assays requiring matched pairs, mass cytometry, and multiplex imaging applications. Antibody use should be optimized by the end user for each application and assay.

Storage

Storage:
Store at -80°C.
Storage Buffer:
PBS only, pH7.3

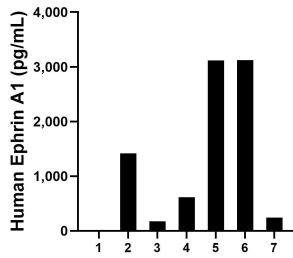
For technical support and original validation data for this product please contact:

T: 1 (888) 4PTGLAB (1-888-478-4522) (toll free in USA), or 1(312) 455-8498 (outside USA)

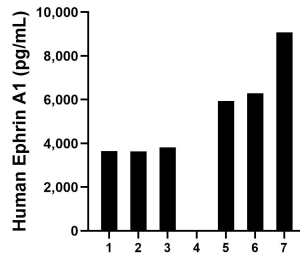
E: proteintech@ptglab.com
W: ptglab.com

This product is exclusively available under Proteintech Group brand and is not available to purchase from any other manufacturer.

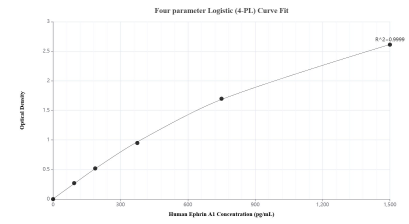
Selected Validation Data



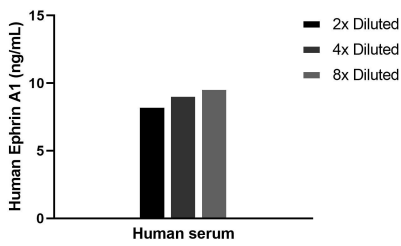
Plasma of seven individual healthy human donors was measured. The Ephrin A1 concentration of detected samples was determined to be 1,243.3 pg/mL with a range of 17.6-3,119.6 pg/mL.



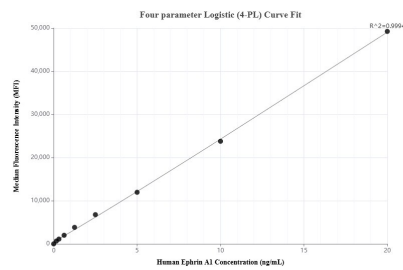
Serum of seven individual healthy human donors was measured. The Ephrin A1 concentration of detected samples was determined to be 4,635.6 pg/mL with a range of 49.2-9,074.2 pg/mL.



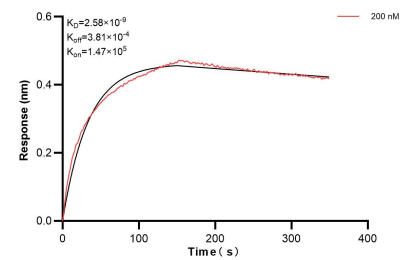
Sandwich ELISA standard curve of MP03040-2, Human Ephrin A1 Recombinant Matched Antibody Pair - PBS only. 87470-4-PBS was coated to a plate as the capture antibody and incubated with serial dilutions of standard Eg5498. 87470-5-PBS was HRP conjugated as the detection antibody. Range: 93.8-1500 pg/mL.



The mean Ephrin A1 concentration was determined to be 9.0 ng/mL in human serum.



Cytometric bead array standard curve of MP03040-1, Ephrin A1 Recombinant Matched Antibody Pair, PBS Only. Capture antibody: 87470-4-PBS. Detection antibody: 87470-3-PBS. Standard: Eg5498. Range: 0.156-20 ng/mL.



Biolayer interferometry (BLI) kinetic assay of 87470-4-PBS against Human Ephrin A1 was performed. The affinity constant is 2.58 nM.