

For Research Use Only

CCL11/Eotaxin Recombinant monoclonal antibody, PBS Only (Detector)

Catalog Number: 87475-1-PBS



Basic Information

Catalog Number: 87475-1-PBS	GenBank Accession Number: BC017850	Purification Method: Protein A purification
Size: 100ug , Concentration: 1 mg/ml by Nanodrop;	GeneID (NCBI): 6356	CloneNo.: 251987D1
Source: Rabbit	UNIPROT ID: P51671	
Isotype: IgG	Full Name: chemokine (C-C motif) ligand 11	
Immunogen Catalog Number: EG5095	Calculated MW: 97 aa, 11 kDa	

Applications

Tested Applications:
Sandwich ELISA, Indirect ELISA

Species Specificity:
human

Product Information

87475-1-PBS targets CCL11/Eotaxin as part of a matched antibody pair:

MP03000-1: 87475-2-PBS capture and 87475-1-PBS detection (validated in Sandwich ELISA)

Unconjugated rabbit recombinant monoclonal antibody in PBS only (BSA and azide free) storage buffer at a concentration of 1 mg/mL, ready for conjugation. Created using Proteintech's proprietary in-house recombinant technology. Recombinant production enables unrivalled batch-to-batch consistency, easy scale-up, and future security of supply.

This conjugation ready format makes antibodies ideal for use in many applications including: ELISAs, multiplex assays requiring matched pairs, mass cytometry, and multiplex imaging applications. Antibody use should be optimized by the end user for each application and assay.

Storage

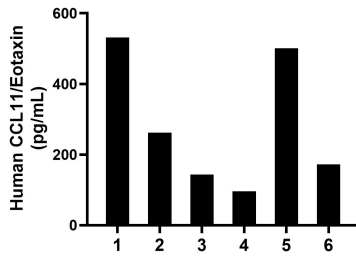
Storage:
Store at -80°C.

Storage Buffer:
PBS only, pH7.3

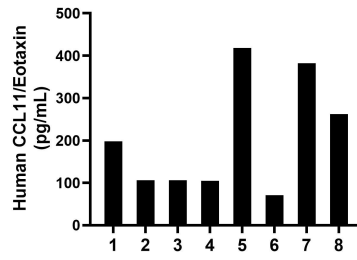
For technical support and original validation data for this product please contact:
T: 1 (888) 4PTGLAB (1-888-478-4522) (toll free in USA), or 1(312) 455-8498 (outside USA) E: proteintech@ptglab.com
W: ptglab.com

This product is exclusively available under Proteintech Group brand and is not available to purchase from any other manufacturer.

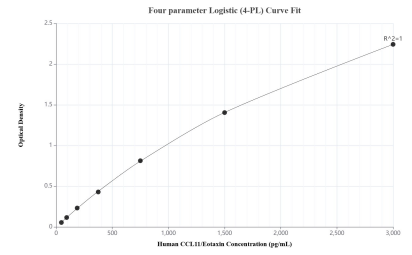
Selected Validation Data



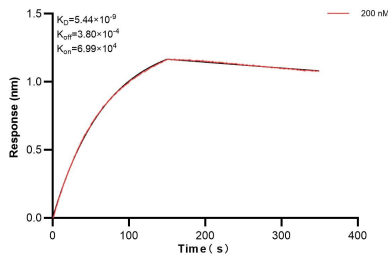
Plasma of six individual healthy human donors was measured. The CCL11/Eotaxin concentration of detected samples was determined to be 284.4 pg/mL with a range of 95.7-531.2 pg/mL.



Serum of eight individual healthy human donors was measured. The CCL11/Eotaxin concentration of detected samples was determined to be 206.0 pg/mL with a range of 70.9-418.0 pg/mL.



Sandwich ELISA standard curve of MP03000-1, Human CCL11/Eotaxin Recombinant Matched Antibody Pair - PBS only. 87475-2-PBS was coated to a plate as the capture antibody and incubated with serial dilutions of standard Eg5095. 87475-1-PBS was HRP conjugated as the detection antibody. Range: 46.9-3000 pg/mL.



Biolayer interferometry (BLI) kinetic assays of 87475-1-PBS against Human CCL11/Eotaxin was performed. The affinity constant is 5.44 nM.