

For Research Use Only

CHP1 Recombinant monoclonal antibody, PBS Only (Detector)

Catalog Number: 87479-3-PBS



Basic Information

Catalog Number: 87479-3-PBS	GenBank Accession Number: NM_007236.5	Purification Method: Protein A purification
Size: 100ug , Concentration: 1 mg/ml by Nanodrop;	GeneID (NCBI): 11261	CloneNo.: 252725D7
Source: Rabbit	UNIPROT ID: Q99653	
Isotype: IgG	Full Name: calcium binding protein P22	
Immunogen Catalog Number: EG5746	Calculated MW: 22 kDa	

Applications

Tested Applications:
Cytometric bead array, Sandwich ELISA, Indirect ELISA

Species Specificity:
human

Product Information

87479-3-PBS targets CHP1 as part of a matched antibody pair:

MP03054-1: 87479-4-PBS capture and 87479-3-PBS detection (validated in Cytometric bead array)

MP03054-2: 87479-5-PBS capture and 87479-3-PBS detection (validated in Sandwich ELISA)

Unconjugated rabbit recombinant monoclonal antibody in PBS only (BSA and azide free) storage buffer at a concentration of 1 mg/mL, ready for conjugation. Created using Proteintech's proprietary in-house recombinant technology. Recombinant production enables unrivalled batch-to-batch consistency, easy scale-up, and future security of supply.

This conjugation ready format makes antibodies ideal for use in many applications including: ELISAs, multiplex assays requiring matched pairs, mass cytometry, and multiplex imaging applications. Antibody use should be optimized by the end user for each application and assay.

Storage

Storage:
Store at -80°C.
Storage Buffer:
PBS only, pH7.3

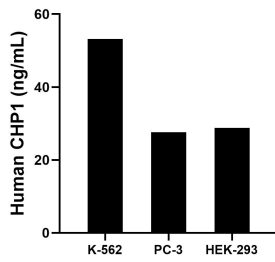
For technical support and original validation data for this product please contact:

T: 1 (888) 4PTGLAB (1-888-478-4522) (toll free in USA), or 1(312) 455-8498 (outside USA)

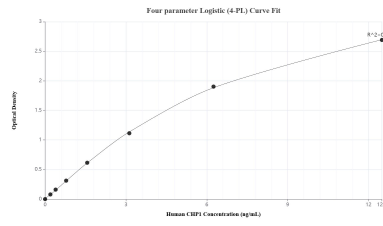
E: proteintech@ptglab.com
W: ptglab.com

This product is exclusively available under Proteintech Group brand and is not available to purchase from any other manufacturer.

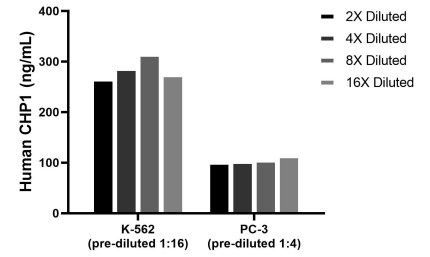
Selected Validation Data



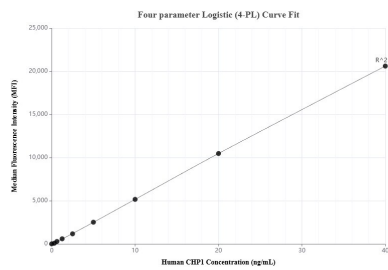
The mean CHP1 concentration was determined to be 53.22 ng/mL in K-562 cell extract based on a 1.20 mg/mL extract load, 27.64 ng/mL in PC-3 cell extract based on a 1.30 mg/mL extract load and 28.79 ng/mL in HEK-293 cell extract based on a 1.20 mg/mL extract load.



Sandwich ELISA standard curve of MP03054-2, Human CHP1 Recombinant Matched Antibody Pair - PBS only. 87479-5-PBS was coated to a plate as the capture antibody and incubated with serial dilutions of standard Eg5746. 87479-3-PBS was HRP conjugated as the detection antibody. Range: 0.195-12.5 ng/mL



The mean CHP1 concentration was determined to be 285.0 ng/mL in K-562 cell extract based on a 1.2 mg/mL extract load, 105.5 ng/mL in PC-3 cell extract based on a 1.2 mg/mL extract load.



Cytometric bead array standard curve of MP03054-1, CHP1 Recombinant Matched Antibody Pair, PBS Only. Capture antibody: 87479-4-PBS. Detection antibody: 87479-3-PBS. Standard: Eg5746. Range: 0.312-40 ng/mL