

For Research Use Only

# LY6K Recombinant monoclonal antibody, PBS Only

Catalog Number: 87480-1-PBS



## Basic Information

<b>Catalog Number:</b> 87480-1-PBS	<b>GenBank Accession Number:</b> NM_017527.3	<b>Purification Method:</b> Protein A purification
<b>Size:</b> 100ug , Concentration: 1 mg/ml by Nanodrop;	<b>GeneID (NCBI):</b> 54742	<b>CloneNo.:</b> 252714A11
<b>Source:</b> Rabbit	<b>UNIPROT ID:</b> Q17RY6-1	
<b>Isotype:</b> IgG	<b>Full Name:</b> lymphocyte antigen 6 complex, locus K	
<b>Immunogen Catalog Number:</b> EG5676	<b>Calculated MW:</b> 19 kDa	
	<b>Observed MW:</b> 18-26 kDa	

## Applications

**Tested Applications:**  
WB, Indirect ELISA

**Species Specificity:**  
human

## Background Information

The LY6K (Lymphocyte antigen 6K) protein belongs to the LY6/uPAR superfamily and is a class of small glycoproteins that are anchored to the outer side of the cell membrane via glycosylphosphatidylinositol (GPI).

## Storage

**Storage:**  
Store at -80°C.

**Storage Buffer:**  
PBS only, pH7.3

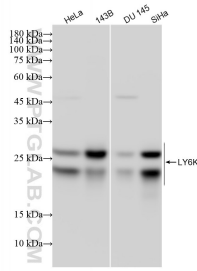
For technical support and original validation data for this product please contact:

T: 1 (888) 4PTGLAB (1-888-478-4522) (toll free in USA), or 1(312) 455-8498 (outside USA)

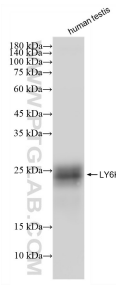
E: [proteintech@ptglab.com](mailto:proteintech@ptglab.com)  
W: [ptglab.com](http://ptglab.com)

**This product is exclusively available under Proteintech Group brand and is not available to purchase from any other manufacturer.**

## Selected Validation Data



Various lysates were subjected to SDS PAGE followed by western blot with 87480-1-RR (LY6K antibody) at dilution of 1:5000 incubated at room temperature for 1.5 hours. This data was developed using the same antibody clone with 87480-1-PBS in a different storage buffer formulation.



Various lysates were subjected to SDS PAGE followed by western blot with 87480-1-RR (LY6K antibody) at dilution of 1:5000 incubated at room temperature for 1.5 hours. This data was developed using the same antibody clone with 87480-1-PBS in a different storage buffer formulation.