

For Research Use Only

Mouse CD18 Recombinant monoclonal antibody, PBS Only (Detector)

Catalog Number: 87481-1-PBS



Basic Information

Catalog Number: 87481-1-PBS	GenBank Accession Number: GeneID (NCBI): 16414	Purification Method: Protein A purification
Size: 100ug, Concentration: 1 mg/ml by Nanodrop;	UNIPROT ID: P11835	CloneNo.: 252753H7
Source: Rabbit	Full Name: integrin beta 2	
Isotype: IgG	Observed MW: 85-90 kDa	
Immunogen Catalog Number: EG10459		

Applications

Tested Applications:
WB, Sandwich ELISA, Indirect ELISA

Species Specificity:
mouse, rat

Product Information

87481-1-PBS targets CD18 as part of a matched antibody pair:

MP03055-2: 87481-3-PBS capture and 87481-1-PBS detection (validated in Sandwich ELISA)

Unconjugated rabbit recombinant monoclonal antibody in PBS only (BSA and azide free) storage buffer at a concentration of 1 mg/mL, ready for conjugation. Created using Proteintech's proprietary in-house recombinant technology. Recombinant production enables unrivalled batch-to-batch consistency, easy scale-up, and future security of supply.

This conjugation ready format makes antibodies ideal for use in many applications including: ELISAs, multiplex assays requiring matched pairs, mass cytometry, and multiplex imaging applications. Antibody use should be optimized by the end user for each application and assay.

Background Information

CD18, also known as integrin beta-2, is a transmembrane protein that forms heterodimers with CD11a, CD11b, CD11c, CD11d (PMID: 1968349). CD11a/CD18 (LFA-1) is expressed by all leukocytes, while CD11b/CD18 (Mac-1) and CD11c/CD18 (p150,95) are normally restricted to expression on monocytes, macrophages, polymorphonuclear lymphocytes (PMNs), and natural killer cells (PMID: 1968349; 3109455; 10946284). CD18 plays an important role in mediating cell adhesion during immune response and defects of CD18 cause leukocyte adhesion deficiency (PMID: 3594570).

Storage

Storage:
Store at -80°C.

Storage Buffer:
PBS only, pH7.3

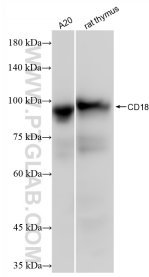
For technical support and original validation data for this product please contact:

T: 1 (888) 4PTGLAB (1-888-478-4522) (toll free in USA), or 1(312) 455-8498 (outside USA)

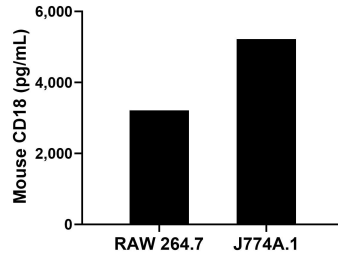
E: proteintech@ptglab.com
W: ptglab.com

This product is exclusively available under Proteintech Group brand and is not available to purchase from any other manufacturer.

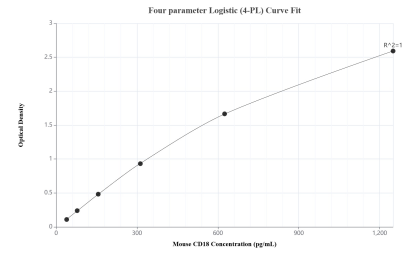
Selected Validation Data



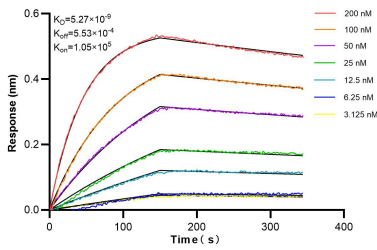
Various lysates were subjected to SDS PAGE followed by western blot with 87481-1-RR (ITB2 antibody) at dilution of 1:10000 incubated at room temperature for 1.5 hours. This data was developed using the same antibody clone with 87481-1-PBS in a different storage buffer formulation.



The mean CD18 concentration was determined to be 3,214.8 pg/mL in RAW 264.7 cell extract based on a 1.2 mg/mL extract load and 5,220.1 pg/mL in J774A.1 cell extract based on a 1.2 mg/mL extract load.



Sandwich ELISA standard curve of MP03055-2, Mouse CD18 Recombinant Matched Antibody Pair - PBS only. 87481-3-PBS was coated to a plate as the capture antibody and incubated with serial dilutions of standard Eg10459. 87481-1-PBS was HRP conjugated as the detection antibody. Range: 39.1-1250 pg/mL



Biolayer interferometry (BLI) kinetic assays of 87481-1-RR against Mouse CD18 were performed. The affinity constant is 5.27 nM.