

For Research Use Only

# Mouse CD18 Recombinant monoclonal antibody, PBS Only (Detector)

Catalog Number: 87481-2-PBS



## Basic Information

<b>Catalog Number:</b> 87481-2-PBS	<b>GenBank Accession Number:</b> GeneID (NCBI): 16414	<b>Purification Method:</b> Protein A purification
<b>Size:</b> 100ug , Concentration: 1 mg/ml by Nanodrop;	<b>Full Name:</b> integrin beta 2	<b>CloneNo.:</b> 252753A4
<b>Source:</b> Rabbit	<b>Observed MW:</b> 85-90 kDa	
<b>Isotype:</b> IgG		
<b>Immunogen Catalog Number:</b> EG10459		

## Applications

**Tested Applications:**  
WB, IHC, Cytometric bead array, Indirect ELISA

**Species Specificity:**  
mouse

## Product Information

87481-2-PBS targets CD18 as part of a matched antibody pair:

MP03055-1: 87481-3-PBS capture and 87481-2-PBS detection (validated in Cytometric bead array)

Unconjugated rabbit recombinant monoclonal antibody in PBS only (BSA and azide free) storage buffer at a concentration of 1 mg/mL, ready for conjugation. Created using Proteintech's proprietary in-house recombinant technology. Recombinant production enables unrivalled batch-to-batch consistency, easy scale-up, and future security of supply.

This conjugation ready format makes antibodies ideal for use in many applications including: ELISAs, multiplex assays requiring matched pairs, mass cytometry, and multiplex imaging applications. Antibody use should be optimized by the end user for each application and assay.

## Background Information

CD18, also known as integrin beta-2, is a transmembrane protein that forms heterodimers with CD11a, CD11b, CD11c, CD11d (PMID: 1968349). CD11a/CD18 (LFA-1) is expressed by all leukocytes, while CD11b/CD18 (Mac-1) and CD11c/CD18 (p150,95) are normally restricted to expression on monocytes, macrophages, polymorphonuclear lymphocytes (PMNs), and natural killer cells (PMID: 1968349; 3109455; 10946284). CD18 plays an important role in mediating cell adhesion during the immune response, and defects of CD18 cause leukocyte adhesion deficiency (PMID: 3594570).

## Storage

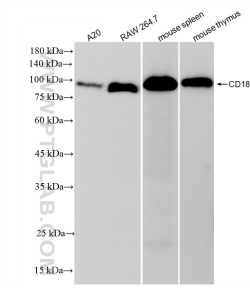
**Storage:**  
Store at -80°C.

**Storage Buffer:**  
PBS only, pH7.3

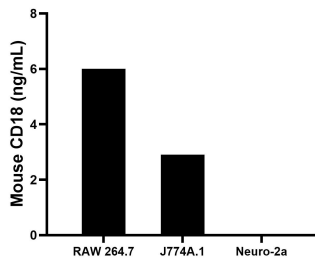
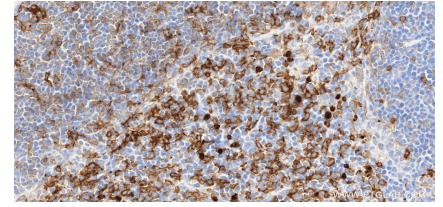
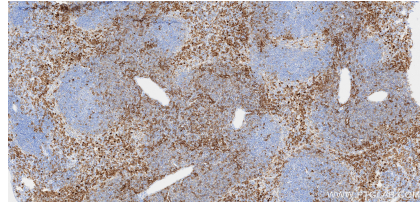
For technical support and original validation data for this product please contact:  
T: 1 (888) 4PTGLAB (1-888-478-4522) (toll free in USA), or 1(312) 455-8498 (outside USA)      E: proteintech@ptglab.com  
W: ptglab.com

**This product is exclusively available under Proteintech Group brand and is not available to purchase from any other manufacturer.**

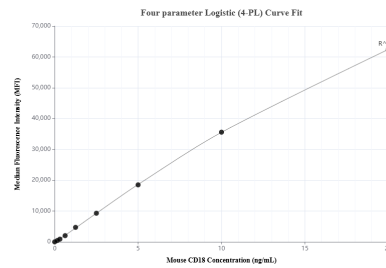
## Selected Validation Data



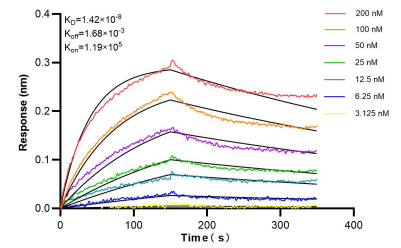
Various lysates were subjected to SDS PAGE followed by western blot with 87481-2-RR (ITB2 antibody) at dilution of 1:10000 incubated at room temperature for 1.5 hours. This data was developed using the same antibody clone with 87481-2-PBS in a different storage buffer formulation.



The mean CD18 concentration was determined to be 6.0 ng/mL in RAW 264.7 cell extract based on a 1.2 mg/mL extract load, 2.9 ng/mL in J774A.1 cell extract based on a 1.3 mg/mL extract load, Neuro-2a cell extract were served as a negative control.



Cytometric bead array standard curve of MP03055-1, MOUSE CD18 Recombinant Matched Antibody Pair, PBS Only. Capture antibody: 87481-3-PBS. Detection antibody: 87481-2-PBS. Standard: Eg10459. Range: 0.156-20 ng/mL.



Bi-layer interferometry (BLI) kinetic assays of 87481-2-RR against Mouse CD18 were performed. The affinity constant is 14.2 nM.