

For Research Use Only

SNCA Recombinant monoclonal antibody, PBS Only (Capture)

Catalog Number: 87489-2-PBS



Basic Information

Catalog Number:

87489-2-PBS

Size:

100ug, Concentration: 1 mg/ml by Nanodrop;

Source:

Rabbit

Isotype:

IgG

Immunogen Catalog Number:

EG5390

GenBank Accession Number:

BC108275

GeneID (NCBI):

6622

UNIPROT ID:

P37840

Full Name:

synuclein, alpha (non A4 component of amyloid precursor)

Purification Method:

Protein A purification

CloneNo.:

251410G10

Applications

Tested Applications:

Sandwich ELISA, Indirect ELISA

Species Specificity:

human

Product Information

87489-2-PBS targets SNCA as part of a matched antibody pair:

MP02993-1: 87489-2-PBS capture and 87489-1-PBS detection (validated in Sandwich ELISA)

Unconjugated rabbit recombinant monoclonal antibody in PBS only (BSA and azide free) storage buffer at a concentration of 1 mg/mL, ready for conjugation. Created using Proteintech's proprietary in-house recombinant technology. Recombinant production enables unrivalled batch-to-batch consistency, easy scale-up, and future security of supply.

This conjugation ready format makes antibodies ideal for use in many applications including: ELISAs, multiplex assays requiring matched pairs, mass cytometry, and multiplex imaging applications. Antibody use should be optimized by the end user for each application and assay.

Storage

Storage:

Store at -80°C.

Storage Buffer:

PBS only, pH7.3

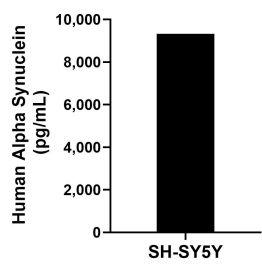
For technical support and original validation data for this product please contact:

T: 1 (888) 4PTGLAB (1-888-478-4522) (toll free in USA), or 1(312) 455-8498 (outside USA)

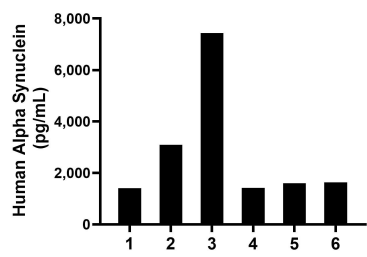
E: proteintech@ptglab.com
W: ptglab.com

This product is exclusively available under Proteintech Group brand and is not available to purchase from any other manufacturer.

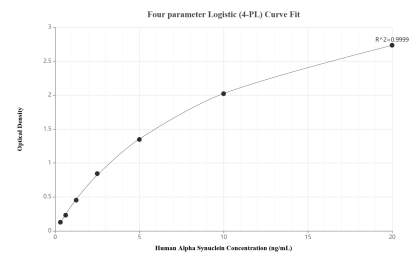
Selected Validation Data



The mean Alpha Synuclein concentration was determined to be 9,321.89 ng/mL in SH-SY5Y cell extract based on a 1.20 mg/mL extract load.



Plasma of six individual healthy human donors was measured. The Alpha Synuclein concentration of detected samples was determined to be 2,765.24 pg/mL with a range of 1,404.76-7,435.16 pg/mL.



Sandwich ELISA standard curve of MP02993-1, Human Alpha Synuclein Recombinant Matched Antibody Pair - PBS only. 87489-2-PBS was coated to a plate as the capture antibody and incubated with serial dilutions of standard Eg5390. 87489-1-PBS was HRP conjugated as the detection antibody. Range: 0.313-20 ng/mL.