

For Research Use Only

GPR15 Recombinant monoclonal antibody, PBS Only

Catalog Number: 87491-1-PBS



Basic Information

Catalog Number: 87491-1-PBS	GenBank Accession Number: BC101779	Purification Method: Protein A purification
Size: 100ug, Concentration: 1 mg/ml by Nanodrop;	GeneID (NCBI): 2838	CloneNo.: 252521C8
Source: Rabbit	UNIPROT ID: P49685	
Isotype: IgG	Full Name: G protein-coupled receptor 15	
	Calculated MW: 360 aa, 41 kDa	
	Observed MW: 40 kDa	

Applications

Tested Applications:
WB, Indirect ELISA

Species Specificity:
human, mouse, rat

Background Information

GPR15 is a Gi-coupled GPCR that directs T cell homing to the colon, playing a central role in mucosal immune surveillance and intestinal homeostasis. Through recognition of GPR15L, GPR15 regulates lymphocyte migration and inflammatory tone within the gut. Dysregulation of this axis contributes to inflammatory bowel disease, autoimmune pathology, and altered tumor immune landscapes, highlighting GPR15 as a key mediator of tissue-specific immune trafficking.

Storage

Storage:
Store at -80°C.

Storage Buffer:
PBS only, pH7.3

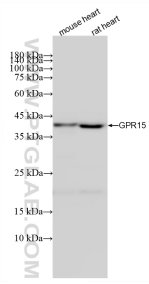
For technical support and original validation data for this product please contact:

T: 1 (888) 4PTGLAB (1-888-478-4522) (toll free in USA), or 1(312) 455-8498 (outside USA)

E: proteintech@ptglab.com
W: ptglab.com

This product is exclusively available under Proteintech Group brand and is not available to purchase from any other manufacturer.

Selected Validation Data



Various lysates were subjected to SDS PAGE followed by western blot with 87491-1-RR (GPR15 antibody) at dilution of 1:10000 incubated at room temperature for 1.5 hours. This data was developed using the same antibody clone with 87491-1-PBS in a different storage buffer formulation.