

For Research Use Only

# GPR15 Recombinant monoclonal antibody

Catalog Number: 87491-1-RR



## Basic Information

<b>Catalog Number:</b> 87491-1-RR	<b>GenBank Accession Number:</b> BC101779	<b>Purification Method:</b> Protein A purification
<b>Size:</b> 100ul , Concentration: 1000 µg/ml by Nanodrop;	<b>GeneID (NCBI):</b> 2838	<b>CloneNo.:</b> 252521C8
<b>Source:</b> Rabbit	<b>UNIPROT ID:</b> P49685	<b>Recommended Dilutions:</b> WB: 1:5000-1:50000
<b>Isotype:</b> IgG	<b>Full Name:</b> G protein-coupled receptor 15	
	<b>Calculated MW:</b> 360 aa, 41 kDa	
	<b>Observed MW:</b> 40 kDa	

## Applications

<b>Tested Applications:</b> WB, ELISA	<b>Positive Controls:</b> WB : mouse heart tissue, rat heart tissue
<b>Species Specificity:</b> human, mouse, rat	

## Background Information

GPR15 is a Gi-coupled GPCR that directs T cell homing to the colon, playing a central role in mucosal immune surveillance and intestinal homeostasis. Through recognition of GPR15L, GPR15 regulates lymphocyte migration and inflammatory tone within the gut. Dysregulation of this axis contributes to inflammatory bowel disease, autoimmune pathology, and altered tumor immune landscapes, highlighting GPR15 as a key mediator of tissue-specific immune trafficking.

## Storage

**Storage:**  
Store at -20°C. Stable for one year after shipment.  
**Storage Buffer:**  
PBS with 0.02% sodium azide and 50% glycerol, pH7.3  
Aliquoting is unnecessary for -20°C storage

\*\*\* 20ul sizes contain 0.1% BSA

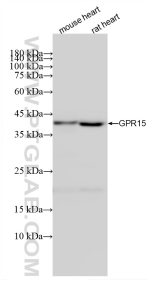
For technical support and original validation data for this product please contact:

T: 1 (888) 4PTGLAB (1-888-478-4522) (toll free in USA), or 1(312) 455-8498 (outside USA)

E: [proteintech@ptglab.com](mailto:proteintech@ptglab.com)  
W: [ptglab.com](http://ptglab.com)

This product is exclusively available under Proteintech Group brand and is not available to purchase from any other manufacturer.

## Selected Validation Data



Various lysates were subjected to SDS PAGE followed by western blot with 87491-1-RR (GPR15 antibody) at dilution of 1:10000 incubated at room temperature for 1.5 hours.