

For Research Use Only

Integrin Beta 1/CD29 Recombinant monoclonal antibody

Catalog Number:87495-1-RR



Basic Information

Catalog Number: 87495-1-RR	GenBank Accession Number: 16412	Purification Method: Protein A purification
Size: 100ul , Concentration: 1000 µg/ml by Nanodrop;	GeneID (NCBI): 16412	CloneNo.: 252764F11
Source: Rabbit	UNIPROT ID: P09055	Recommended Dilutions: WB: 1:1000-1:4000 IHC: 1:500-1:2000 IF/ICC: 1:50-1:500
Isotype: IgG	Full Name: integrin beta 1 (fibronectin receptor beta)	
Immunogen Catalog Number: EG10460	Observed MW: 130-140 kDa	

Applications

Tested Applications:
WB, IHC, IF/ICC, ELISA

Species Specificity:
mouse

Note-IHC: suggested antigen retrieval with TE buffer pH 9.0; (*) Alternatively, antigen retrieval may be performed with citrate buffer pH 6.0

Positive Controls:

WB : RAW 264.7 cells,

IHC : mouse spleen tissue,

IF/ICC : RAW 264.7 cells,

Background Information

Integrin beta-1 (ITGB1), also named as CD29, is a single-chain type I glycoprotein that is expressed in a heterodimeric complex with one of six distinct α subunits, comprising the very late activation antigen (VLA) subfamily of adhesion receptors. It is one of the essential surface molecules expressed on human MSCs from bone marrow and other sources. The β 1 subunit is also broadly expressed on lymphocytes and monocytes, with weaker expression on granulocytes, and is not expressed on erythrocytes. These receptors are involved in a variety of cell-cell and cell-matrix interactions.

Storage

Storage:

Store at -20°C. Stable for one year after shipment.

Storage Buffer:

PBS with 0.02% sodium azide and 50% glycerol, pH7.3

Aliquoting is unnecessary for -20°C storage

*** 20ul sizes contain 0.1% BSA

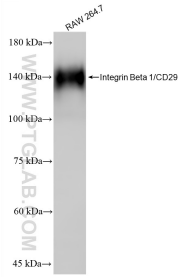
For technical support and original validation data for this product please contact:

T: 1 (888) 4PTGLAB (1-888-478-4522) (toll free in USA), or 1(312) 455-8498 (outside USA)

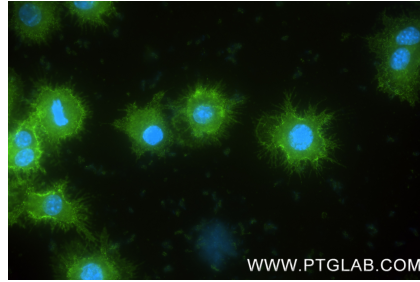
E: proteintech@ptglab.com
W: ptglab.com

This product is exclusively available under Proteintech Group brand and is not available to purchase from any other manufacturer.

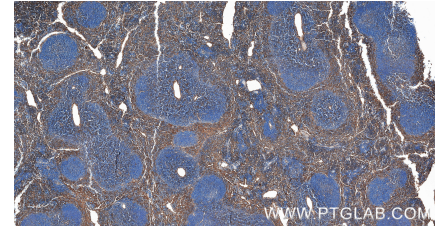
Selected Validation Data



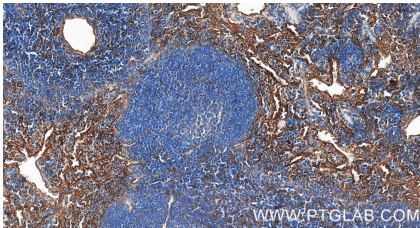
RAW 264.7 cells lysates were subjected to SDS PAGE followed by western blot with 87495-1-RR (ITB1 antibody) at dilution of 1:2000 incubated at room temperature for 1.5 hours.



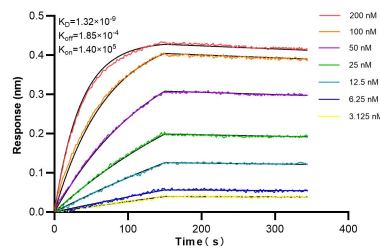
Immunofluorescent analysis of (4% PFA) fixed RAW 264.7 cells using Integrin Beta 1/CD29 antibody (87495-1-RR, Clone: 252764F11) at dilution of 1:200 and CoraLite®488-Conjugated Goat Anti-Rabbit IgG(H+L) (SA00013-2).



Immunohistochemical analysis of paraffin-embedded mouse spleen tissue slide using 87495-1-RR (Integrin Beta 1/CD29 antibody) at dilution of 1:1000 (under 10x lens). Heat mediated antigen retrieval with Tris-EDTA buffer (pH 9.0).



Immunohistochemical analysis of paraffin-embedded mouse spleen tissue slide using 87495-1-RR (Integrin Beta 1/CD29 antibody) at dilution of 1:1000 (under 40x lens). Heat mediated antigen retrieval with Tris-EDTA buffer (pH 9.0).



Biolayer interferometry (BLI) kinetic assays of 87495-1-RR against Mouse Integrin Beta 1/CD29 were performed. The affinity constant is 1.32 nM.